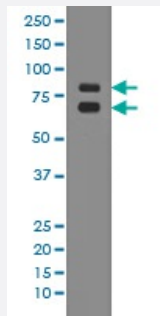


# ASH2L monoclonal antibody, clone EOB-1

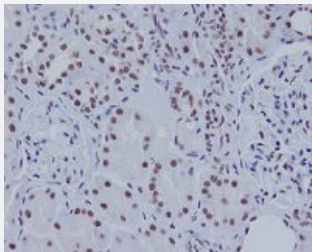
Catalog # MAB19579      Size 100 uL

## Applications



### Western Blot (Cell lysate)

Western blot analysis of K562 cell lysate with ASH2L monoclonal antibody.



### Immunohistochemistry (Formalin/PFA-fixed paraffin-embedded sections)

Immunohistochemical staining of paraffin-embedded human kidney with ASH2L monoclonal antibody.

## Specification

<b>Product Description</b>	Rabbit monoclonal antibody raised against synthetic peptide of human ASH2L.
<b>Immunogen</b>	A synthetic peptide corresponding to human ASH2L.
<b>Host</b>	Rabbit
<b>Reactivity</b>	Human, Mouse, Rat
<b>Form</b>	Liquid
<b>Purification</b>	Affinity purification
<b>Isotype</b>	IgG

<b>Recommend Usage</b>	Immunocytochemistry (1:50-1:200) Immunofluorescence (1:50-1:200) Immunohistochemistry (1:50-1:200) Western Blot (1:500-1:2000) The optimal working dilution should be determined by the end user.
<b>Storage Buffer</b>	In PBS, pH 7.4, 150mM NaCl, 0.02% sodium azide and 50% glycerol.
<b>Storage Instruction</b>	Store at -20°C for one year. After reconstitution, at 4°C for one month. It can also be aliquotted and stored frozen at -20°C for a longer time. Avoid repeated freezing and thawing.
<b>Note</b>	This product contains sodium azide: a POISONOUS AND HAZARDOUS SUBSTANCE which should be handled by trained staff only.

## Applications

- Western Blot (Cell lysate)

Western blot analysis of K562 cell lysate with ASH2L monoclonal antibody.

- Immunohistochemistry (Formalin/PFA-fixed paraffin-embedded sections)

Immunohistochemical staining of paraffin-embedded human kidney with ASH2L monoclonal antibody.

- Immunocytochemistry

- Immunofluorescence

## Gene Info — ASH2L

<b>Entrez GeneID</b>	<a href="#">9070</a>
<b>Protein Accession#</b>	<a href="#">Q9UBL3</a>
<b>Gene Name</b>	ASH2L
<b>Gene Alias</b>	ASH2, ASH2L1, ASH2L2, Bre2
<b>Gene Description</b>	ash2 (absent, small, or homeotic)-like (Drosophila)
<b>Omim ID</b>	<a href="#">604782</a>
<b>Gene Ontology</b>	<a href="#">Hyperlink</a>
<b>Gene Summary</b>	small

**Other Designations**ash2-like

---