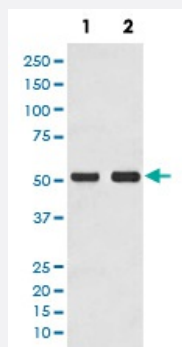


AP2M1 monoclonal antibody, clone GDD-1

Catalog # MAB19563 Size 100 uL

Applications



Western Blot (Cell lysate)

Western blot analysis of (1) HEK293 cell lysate; (2) MCF-7 cell lysate with AP2M1 monoclonal antibody.

Specification

Product Description	Rabbit monoclonal antibody raised against synthetic peptide of human AP2M1.
Immunogen	A synthetic peptide corresponding to human AP2M1.
Host	Rabbit
Reactivity	Human, Mouse, Rat
Form	Liquid
Purification	Affinity purification
Isotype	IgG
Recommend Usage	Western Blot (1:1000-1:2000) The optimal working dilution should be determined by the end user.
Storage Buffer	In PBS, pH 7.4, 150mM NaCl, 0.02% sodium azide and 50% glycerol.
Storage Instruction	Store at -20°C for one year. After reconstitution, at 4°C for one month. It can also be aliquotted and stored frozen at -20°C for a longer time. Avoid repeated freezing and thawing.

Note

This product contains sodium azide: a POISONOUS AND HAZARDOUS SUBSTANCE which should be handled by trained staff only.

Applications

- Western Blot (Cell lysate)

Western blot analysis of (1) HEK293 cell lysate; (2) MCF-7 cell lysate with AP2M1 monoclonal antibody.

Gene Info — AP2M1

Entrez GeneID [1173](#)

Protein Accession# [Q96CW1](#)

Gene Name AP2M1

Gene Alias AP50, CLAPM1, mu2

Gene Description adaptor-related protein complex 2, mu 1 subunit

Omim ID [601024](#)

Gene Ontology [Hyperlink](#)

Gene Summary This gene encodes a subunit of the heterotetrameric coat assembly protein complex 2 (AP2), which belongs to the adaptor complexes medium subunits family. The encoded protein is required for the activity of a vacuolar ATPase, which is responsible for proton pumping occurring in the acidification of endosomes and lysosomes. The encoded protein may also play an important role in regulating the intracellular trafficking and function of CTLA-4 protein. Two transcript variants encoding different isoforms have been found for this gene. [provided by RefSeq]

Other Designations AP-2 mu 2 chain|HA2 50 kDA subunit|clathrin adaptor complex AP2, mu subunit|clathrin assembly protein complex 2 medium chain|clathrin coat adaptor protein AP50|clathrin-associated/assembly/adaptor protein, medium 1|plasma membrane adaptor AP-2 50kDA prote

Pathway

- [Endocytosis](#)

Disease

- [Disease Progression](#)
- [Disease Susceptibility](#)
- [Genetic Predisposition to Disease](#)
- [HIV Infections](#)
- [Kidney Failure](#)