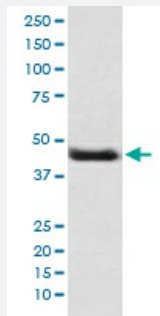


# ACTA2 monoclonal antibody, clone HA-1

Catalog # MAB19545      Size 100 uL

## Applications



### Western Blot (Cell lysate)

Western blot analysis of A431 cell lysate with ACTA2 monoclonal antibody.

## Specification

<b>Product Description</b>	Rabbit monoclonal antibody raised against synthetic peptide of human ACTA2.
<b>Immunogen</b>	A synthetic peptide corresponding to human ACTA2.
<b>Host</b>	Rabbit
<b>Reactivity</b>	Human, Mouse, Rat
<b>Form</b>	Liquid
<b>Purification</b>	Affinity purification
<b>Isotype</b>	IgG
<b>Recommend Usage</b>	Immunohistochemistry (1:50-1:200) Immunoprecipitation (1:30) Western Blot (1:500-1:2000) The optimal working dilution should be determined by the end user.
<b>Storage Buffer</b>	In PBS, pH 7.4, 150mM NaCl, 0.02% sodium azide and 50% glycerol.
<b>Storage Instruction</b>	Store at -20°C for one year. After reconstitution, at 4°C for one month. It can also be aliquotted and stored frozen at -20°C for a longer time. Avoid repeated freezing and thawing.

**Note**

This product contains sodium azide: a POISONOUS AND HAZARDOUS SUBSTANCE which should be handled by trained staff only.

## Applications

- Western Blot (Cell lysate)

Western blot analysis of A431 cell lysate with ACTA2 monoclonal antibody.

- Immunohistochemistry (Formalin/PFA-fixed paraffin-embedded sections)

- Immunoprecipitation

- Flow Cytometry

## Gene Info — ACTA2

**Entrez GeneID**[59](#)**Protein Accession#**[P62736](#)**Gene Name**

ACTA2

**Gene Alias**

AAT6, ACTSA

**Gene Description**

actin, alpha 2, smooth muscle, aorta

**Omim ID**[102620](#)**Gene Ontology**[Hyperlink](#)**Gene Summary**

The protein encoded by this gene belongs to the actin family of proteins, which are highly conserved proteins that play a role in cell motility, structure and integrity. Alpha, beta and gamma actin isoforms have been identified, with alpha actins being a major constituent of the contractile apparatus, while beta and gamma actins are involved in the regulation of cell motility. This actin is an alpha actin that is found in skeletal muscle. Defects in this gene cause aortic aneurysm familial thoracic type 6. Multiple alternatively spliced variants, encoding the same protein, have been identified. [provided by RefSeq]

**Other Designations**

OTTHUMP00000020042|alpha 2 actin|alpha-cardiac actin|growth-inhibiting gene 46

## Pathway

- [Vascular smooth muscle contraction](#)

## Disease

- [Alzheimer Disease](#)
- [Cardiovascular Diseases](#)
- [Diabetes Mellitus](#)
- [Edema](#)
- [Genetic Predisposition to Disease](#)