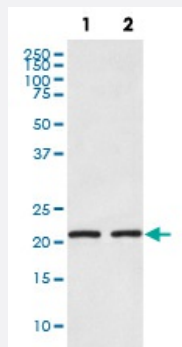


AKAP14 monoclonal antibody, clone FGO-1

Catalog # MAB19538 Size 100 uL

Applications



Western Blot (Cell lysate)

Western blot analysis of (1) Jurkat cell lysate; (2) A549 cell lysate with AKAP14 monoclonal antibody.

Specification

Product Description Rabbit monoclonal antibody raised against synthetic peptide of human AKAP14.

Immunogen A synthetic peptide corresponding to human AKAP14.

Host Rabbit

Reactivity Human, Mouse, Rat

Form Liquid

Purification Affinity purification

Isotype IgG

Recommend Usage

- Immunocytochemistry (1:50-1:200)
- Immunofluorescence (1:50-1:200)
- Immunoprecipitation (1:50)
- Western Blot (1:500-1:2000)
- The optimal working dilution should be determined by the end user.

Storage Buffer In PBS, pH 7.4, 150mM NaCl, 0.02% sodium azide and 50% glycerol.

Storage Instruction

Store at -20°C for one year. After reconstitution, at 4°C for one month. It can also be aliquotted and stored frozen at -20°C for a longer time. Avoid repeated freezing and thawing.

Note

This product contains sodium azide: a POISONOUS AND HAZARDOUS SUBSTANCE which should be handled by trained staff only.

Applications

- Western Blot (Cell lysate)

Western blot analysis of (1) Jurkat cell lysate; (2) A549 cell lysate with AKAP14 monoclonal antibody.

- Immunocytochemistry

- Immunofluorescence

- Immunoprecipitation

Gene Info — AKAP14

Entrez GeneID [158798](#)

Protein Accession# [Q86UN6](#)

Gene Name AKAP14

Gene Alias AKAP28

Gene Description A kinase (PRKA) anchor protein 14

Omim ID [300462](#)

Gene Ontology [Hyperlink](#)

Gene Summary

The A-kinase anchor proteins (AKAPs) are a group of structurally diverse proteins, which have the common function of binding to the regulatory subunit of protein kinase A (PKA) and confining the holoenzyme to discrete locations within the cell. This gene encodes a member of the AKAP family. The protein anchors PKA in ciliary axonemes and, in this way, may play a role in regulating ciliary beat frequency. Alternate transcriptional splice variants, encoding different isoforms, have been characterized. [provided by RefSeq]

Other Designations

A-kinase anchoring protein 28|OTTHUMP00000023927|OTTHUMP00000023928|OTTHUMP0000023929|protein kinase A anchoring protein 14