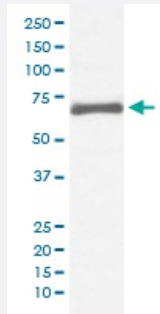


# AFP monoclonal antibody, clone AAOO-1

Catalog # MAB19532      Size 100 uL

## Applications



### Western Blot (Cell lysate)

Western blot analysis of HepG2 cell lysate with AFP monoclonal antibody.

## Specification

**Product Description** Rabbit monoclonal antibody raised against synthetic peptide of human AFP.

**Immunogen** A synthetic peptide corresponding to human AFP.

**Host** Rabbit

**Reactivity** Human

**Form** Liquid

**Purification** Affinity purification

**Isotype** IgG

**Recommend Usage**

- Immunocytochemistry (1:50-1:200)
- Immunofluorescence (1:50-1:200)
- Immunohistochemistry (1:50-1:200)
- Immunoprecipitation (1:50)
- Flow Cytometry (1:50)
- Western Blot (1:500-1:2000)
- The optimal working dilution should be determined by the end user.

**Storage Buffer** In PBS, pH 7.4, 150mM NaCl, 0.02% sodium azide and 50% glycerol.

**Storage Instruction**

Store at -20°C for one year. After reconstitution, at 4°C for one month. It can also be aliquotted and stored frozen at -20°C for a longer time. Avoid repeated freezing and thawing.

**Note**

This product contains sodium azide: a POISONOUS AND HAZARDOUS SUBSTANCE which should be handled by trained staff only.

## Applications

- Western Blot (Cell lysate)

Western blot analysis of HepG2 cell lysate with AFP monoclonal antibody.

- Immunohistochemistry (Formalin/PFA-fixed paraffin-embedded sections)

- Immunocytochemistry

- Immunofluorescence

- Immunoprecipitation

- Flow Cytometry

## Gene Info — AFP

**Entrez GeneID**[174](#)**Protein Accession#**[P02771](#)**Gene Name**

AFP

**Gene Alias**

FETA, HPAFP

**Gene Description**

alpha-fetoprotein

**Omim ID**[104150](#)**Gene Ontology**[Hyperlink](#)

**Gene Summary**

This gene encodes alpha-fetoprotein, a major plasma protein produced by the yolk sac and the liver during fetal life. Alpha-fetoprotein expression in adults is often associated with hepatoma or teratoma. However, hereditary persistence of alpha-fetoprotein may also be found in individuals with no obvious pathology. The protein is thought to be the fetal counterpart of serum albumin, and the alpha-fetoprotein and albumin genes are present in tandem in the same transcriptional orientation on chromosome 4. Alpha-fetoprotein is found in monomeric as well as dimeric and trimeric forms, and binds copper, nickel, fatty acids and bilirubin. The level of alpha-fetoprotein in amniotic fluid is used to measure renal loss of protein to screen for spina bifida and anencephaly. [provided by RefSeq]

**Other Designations**

OTTHUMP00000160480|alpha-1-fetoprotein|alpha-fetoglobulin

**Disease**

- [Carcinoma](#)
- [Liver Cirrhosis](#)
- [Liver Neoplasms](#)