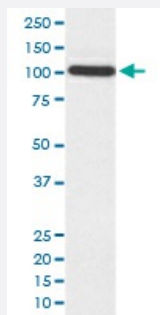


ACTN2 monoclonal antibody, clone AOCB-1

Catalog # MAB19527 Size 100 ug

Applications



Western Blot (Cell lysate)

Western blot analysis of HepG2 cell lysate with ACTN2 monoclonal antibody.

Specification

Product Description	Rabbit monoclonal antibody raised against synthetic peptide of human ACTN2.
Immunogen	A synthetic peptide corresponding to human ACTN2.
Host	Rabbit
Reactivity	Human, Mouse, Rat
Form	Liquid
Purification	Affinity purification
Isotype	IgG
Recommend Usage	Immunohistochemistry (1:50-1:200) Immunoprecipitation (1:50) Western Blot (1:500-1:2000) The optimal working dilution should be determined by the end user.
Storage Buffer	In PBS, pH 7.4, 150mM NaCl, 0.02% sodium azide and 50% glycerol.
Storage Instruction	Store at -20°C for one year. After reconstitution, at 4°C for one month. It can also be aliquotted and stored frozen at -20°C for a longer time. Avoid repeated freezing and thawing.

Note

This product contains sodium azide: a POISONOUS AND HAZARDOUS SUBSTANCE which should be handled by trained staff only.

Applications

- Western Blot (Cell lysate)

Western blot analysis of HepG2 cell lysate with ACTN2 monoclonal antibody.

- Immunohistochemistry (Formalin/PFA-fixed paraffin-embedded sections)

- Immunoprecipitation

Gene Info — ACTN2

Entrez GeneID	88
---------------	--------------------

Protein Accession#	P35609
--------------------	------------------------

Gene Name	ACTN2
-----------	-------

Gene Alias	CMD1AA
------------	--------

Gene Description	actinin, alpha 2
------------------	------------------

Omim ID	102573
---------	------------------------

Gene Ontology	Hyperlink
---------------	---------------------------

Gene Summary

Alpha actinins belong to the spectrin gene superfamily which represents a diverse group of cytoskeletal proteins, including the alpha and beta spectrins and dystrophins. Alpha actinin is an actin-binding protein with multiple roles in different cell types. In nonmuscle cells, the cytoskeletal isoform is found along microfilament bundles and adherens-type junctions, where it is involved in binding actin to the membrane. In contrast, skeletal, cardiac, and smooth muscle isoforms are localized to the Z-disc and analogous dense bodies, where they help anchor the myofibrillar actin filaments. This gene encodes a muscle-specific, alpha actinin isoform that is expressed in both skeletal and cardiac muscles. [provided by RefSeq]

Other Designations	F-actin cross-linking protein OTTHUMP00000037963 alpha-actinin skeletal muscle
--------------------	--

Pathway

- [Adherens junction](#)

- [Arrhythmogenic right ventricular cardiomyopathy \(ARVC\)](#)
- [Focal adhesion](#)
- [Leukocyte transendothelial migration](#)
- [Regulation of actin cytoskeleton](#)
- [Systemic lupus erythematosus](#)
- [Tight junction](#)

Disease

- [Cardiomyopathy](#)
- [Genetic Predisposition to Disease](#)
- [Mental Disorders](#)
- [Tobacco Use Disorder](#)