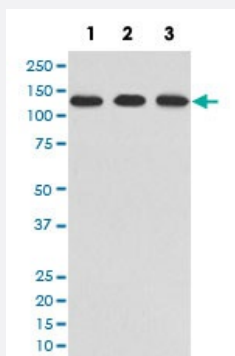


# ABL2 monoclonal antibody, clone AOOD-1

Catalog # MAB19517      Size 100 uL

## Applications



### Western Blot (Cell lysate)

Western blot analysis of (1) HeLa cell lysate; (2) NIH/3T3 cell lysate; (3) PC-12 cell lysate with ABL2 monoclonal antibody.

## Specification

<b>Product Description</b>	Rabbit monoclonal antibody raised against synthetic peptide of human ABL2.
<b>Immunogen</b>	A synthetic peptide corresponding to human ABL2.
<b>Host</b>	Rabbit
<b>Reactivity</b>	Human, Mouse, Rat
<b>Form</b>	Liquid
<b>Purification</b>	Affinity purification
<b>Isotype</b>	IgG
<b>Recommend Usage</b>	Flow Cytometry (1:50) Western Blot (1:500-1:2000) The optimal working dilution should be determined by the end user.
<b>Storage Buffer</b>	In PBS, pH 7.4, 150mM NaCl, 0.02% sodium azide and 50% glycerol.
<b>Storage Instruction</b>	Store at -20°C for one year. After reconstitution, at 4°C for one month. It can also be aliquotted and stored frozen at -20°C for a longer time. Avoid repeated freezing and thawing.

## Note

This product contains sodium azide: a POISONOUS AND HAZARDOUS SUBSTANCE which should be handled by trained staff only.

## Applications

- Western Blot (Cell lysate)

Western blot analysis of (1) HeLa cell lysate; (2) NIH/3T3 cell lysate; (3) PC-12 cell lysate with ABL2 monoclonal antibody.

- Flow Cytometry

## Gene Info — ABL2

Entrez GeneID [27](#)

Protein Accession# [P42684](#)

Gene Name ABL2

Gene Alias ABLL, ARG, FLJ22224, FLJ31718, FLJ41441

Gene Description v-abl Abelson murine leukemia viral oncogene homolog 2 (arg, Abelson-related gene)

Omim ID [164690](#)

Gene Ontology [Hyperlink](#)

**Gene Summary** This gene encodes a member of the Abelson family of nonreceptor tyrosine protein kinase. The protein is highly similar to the ABL1 protein, including the tyrosine kinase, SH2 and SH3 domains, and has a role in cytoskeletal rearrangements by its C-terminal F-actin- and microtubule-binding sequences. This gene is expressed in both normal and tumor cells, and is involved in translocation with the ETV6 gene in leukemia. Multiple alternatively spliced transcript variants encoding different protein isoforms have been found for this gene. [provided by RefSeq]

**Other Designations** Abelson murine leukemia viral (v-abl) oncogene homolog 2|Abelson-related gene protein|OTTHU MP00000033139|arg tyrosine kinase|v-abl Abelson murine leukemia viral oncogene homolog 2

## Pathway

- [ErbB signaling pathway](#)

## Disease

- [Alzheimer disease](#)
- [Cardiovascular Diseases](#)
- [Diabetes Complications](#)
- [Diabetes Mellitus](#)
- [Edema](#)
- [Metabolic Syndrome X](#)
- [Neoplasms](#)
- [Osteoporosis](#)