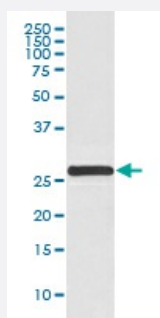


YWHAG monoclonal antibody, clone HAH-25

Catalog # MAB19503 Size 100 uL

Applications



Western Blot (Cell lysate)

Western blot analysis of HeLa cell lysate with YWHAG monoclonal antibody.

Specification

Product Description	Rabbit monoclonal antibody raised against synthetic peptide of human YWHAG.
Immunogen	A synthetic peptide corresponding to human YWHAG.
Host	Rabbit
Reactivity	Human, Mouse, Rat
Form	Liquid
Purification	Affinity purification
Isotype	IgG
Recommend Usage	Flow Cytometry (1:50) Western Blot (1:1000-1:2000) The optimal working dilution should be determined by the end user.
Storage Buffer	In PBS, pH 7.4, 150mM NaCl, 0.02% sodium azide and 50% glycerol.
Storage Instruction	Store at -20°C for one year. After reconstitution, at 4°C for one month. It can also be aliquotted and stored frozen at -20°C for a longer time. Avoid repeated freezing and thawing.

Note

This product contains sodium azide: a POISONOUS AND HAZARDOUS SUBSTANCE which should be handled by trained staff only.

Applications

- Western Blot (Cell lysate)

Western blot analysis of HeLa cell lysate with YWHAG monoclonal antibody.

- Flow Cytometry

Gene Info — YWHAG

Entrez GeneID	7532
Protein Accession#	P61981
Gene Name	YWHAG
Gene Alias	14-3-3GAMMA
Gene Description	tyrosine 3-monooxygenase/tryptophan 5-monooxygenase activation protein, gamma polypeptide
Omim ID	605356
Gene Ontology	Hyperlink
Gene Summary	This gene product belongs to the 14-3-3 family of proteins which mediate signal transduction by binding to phosphoserine-containing proteins. This highly conserved protein family is found in both plants and mammals, and this protein is 100% identical to the rat ortholog. It is induced by growth factors in human vascular smooth muscle cells, and is also highly expressed in skeletal and heart muscles, suggesting an important role for this protein in muscle tissue. It has been shown to interact with RAF1 and protein kinase C, proteins involved in various signal transduction pathways. [provided by RefSeq]
Other Designations	14-3-3 gamma

Pathway

- [Cell cycle](#)
- [Neurotrophin signaling pathway](#)