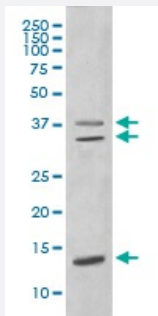


CEBPB monoclonal antibody, clone F-3

Catalog # MAB19488 Size 100 uL

Applications



Western Blot (Cell lysate)

Western blot analysis of MCF-7 cell lysate with CEBPB monoclonal antibody.

Specification

Product Description Rabbit monoclonal antibody raised against synthetic peptide of human CEBPB.

Immunogen A synthetic peptide corresponding to human CEBPB.

Host Rabbit

Reactivity Human, Mouse, Rat

Form Liquid

Purification Affinity purification

Isotype IgG

Recommend Usage

- Immunocytochemistry (1:50-1:200)
- Immunofluorescence (1:50-1:200)
- Immunoprecipitation (1:50)
- Flow Cytometry (1:50)
- Western Blot (1:500-1:2000)
- The optimal working dilution should be determined by the end user.

Storage Buffer In PBS, pH 7.4, 150mM NaCl, 0.02% sodium azide and 50% glycerol.

Storage Instruction

Store at -20°C for one year. After reconstitution, at 4°C for one month. It can also be aliquotted and stored frozen at -20°C for a longer time. Avoid repeated freezing and thawing.

Note

This product contains sodium azide: a POISONOUS AND HAZARDOUS SUBSTANCE which should be handled by trained staff only.

Applications

- Western Blot (Cell lysate)

Western blot analysis of MCF-7 cell lysate with CEBPB monoclonal antibody.

- Immunocytochemistry

- Immunofluorescence

- Immunoprecipitation

- Flow Cytometry

Gene Info — CEBPB

Entrez GeneID[1051](#)**Protein Accession#**[P17676](#)**Gene Name**

CEBPB

Gene Alias

C/EBP-beta, CRP2, IL6DBP, LAP, MGC32080, NF-IL6, TCF5

Gene Description

CCAAT/enhancer binding protein (C/EBP), beta

Omim ID[189965](#)**Gene Ontology**[Hyperlink](#)**Gene Summary**

The protein encoded by this intronless gene is a bZIP transcription factor which can bind as a homodimer to certain DNA regulatory regions. It can also form heterodimers with the related proteins CEBP-alpha, CEBP-delta, and CEBP-gamma. The encoded protein is important in the regulation of genes involved in immune and inflammatory responses and has been shown to bind to the IL-1 response element in the IL-6 gene, as well as to regulatory regions of several acute-phase and cytokine genes. In addition, the encoded protein can bind the promoter and upstream element and stimulate the expression of the collagen type I gene. [provided by RefSeq]

Other Designations

CCAAT/enhancer binding protein beta|interleukin 6-dependent DNA-binding protein|liver-enriched transcriptional activator protein|nuclear factor of interleukin 6|transcription factor 5

Disease

- [Genetic Predisposition to Disease](#)
- [Obesity](#)