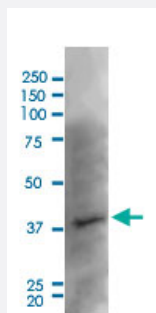


# Kcnj8 monoclonal antibody, clone S366-60 (ATTO 390)

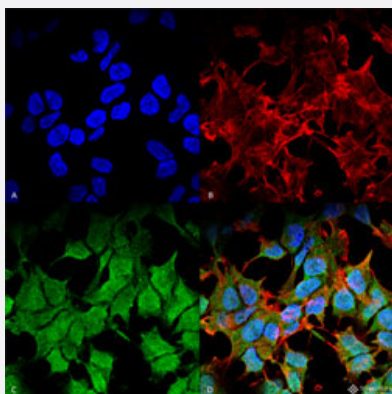
Catalog # MAB19468      Size 100 ug

## Applications



### Western Blot (Tissue lysate)

Western Blot (Tissue lysate) analysis of rat brain.



### Immunocytochemistry

Immunocytochemical staining of SK-N-BE cell line (A) DAPI (blue) nuclear stain, (B) Phalloidin Texas Red F-Actin stain, (C) Kcnj8 Antibody and (D) Composite.

## Specification

|                            |   |
|----------------------------|---|
| <b>Product Description</b> | Mouse monoclonal antibody raised against partial recombinant rat Kcnj8.                                 |
| <b>Immunogen</b>           | Recombinant protein corresponding to amino acids 306-424 at cytoplasmic C-terminus region of rat Kcnj8. |
| <b>Host</b>                | Mouse   |
| <b>Reactivity</b>          | Human, Mouse, Rat   |
| <b>Specificity</b>         | This antibody detects ~45kDa.   |

|                     |  |
|---------------------|--|
| Form                | Liquid   |
| Conjugation         | ATTO 390   |
| Purification        | Protein G purification   |
| Isotype             | IgG2a  |
| Recommend Usage     | Immunocytochemistry (1:100)<br>Immunofluorescence (1:100)<br>Immunohistochemistry (Formalin/PFA-fixed paraffin-embedded sections)<br>Western Blot (1:1000)<br>The optimal working dilution should be determined by the end user. |
| Storage Buffer      | In PBS, pH 7.4 (50% glycerol, 0.09% sodium azide).   |
| Storage Instruction | Store at -20°C.  |
| Note                | This product contains sodium azide: a POISONOUS AND HAZARDOUS SUBSTANCE which should be handled by trained staff only.   |

## Applications

- Western Blot (Tissue lysate)

Western Blot (Tissue lysate) analysis of rat brain.

- Immunohistochemistry (Formalin/PFA-fixed paraffin-embedded sections)

- Immunocytochemistry

Immunocytochemical staining of SK-N-BE cell line (A) DAPI (blue) nuclear stain, (B) Phalloidin Texas Red F-Actin stain, (C) Kcnj8 Antibody and (D) Composite.

- Immunofluorescence

## Gene Info — Kcnj8

|                    |                         |
|--------------------|-------------------------|
| Entrez GeneID      | <a href="#">25472</a>   |
| Protein Accession# | <a href="#">Q63664</a>  |
| Gene Name          | Kcnj8                   |
| Gene Alias         | Kir6.1, UKATP1, uKATP-1 |

|                    |  |
|--------------------|--|
| Gene Description   | potassium inwardly-rectifying channel, subfamily J, member 8   |
| Gene Ontology      | <a href="#">Hyperlink</a>  |
| Gene Summary       | subfamily J  |
| Other Designations | Inwardly rectifying potassium channel gene subfamily J-8 (ATP sensitive) Inwardly rectifying potassium channel gene, subfamily J-8 (ATP sensitive) |