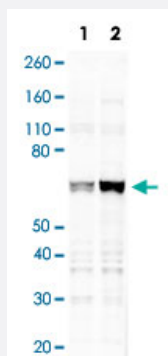


ATF2 (phospho T71) monoclonal antibody, clone ATF2T71-G3

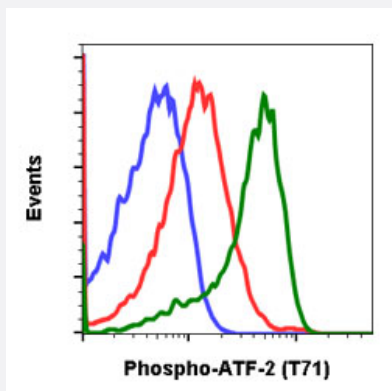
Catalog # MAB18798 Size 20 uL

Applications



Western Blot (Cell lysate)

Western Blot analysis of 293T cell lysate with ATF2 (phospho T71) monoclonal antibody, clone G3 (Cat # MAB18798). Lane 1: untreated or Lane 2: treated with UV.



Flow Cytometry

Flow cytometric analysis of Jurkat cells with ATF2 (phospho T71) monoclonal antibody, clone G3 (Cat # MAB18798). Secondary antibody only negative control (blue) or untreated (red) or treated with anisomycin (green).

Specification

Product Description	Rabbit monoclonal antibody raised against synthetic phosphopeptide of human ATF2.
Immunogen	A synthetic phosphopeptide corresponding to residues surrounding T71 of human ATF2.
Host	Rabbit
Reactivity	Human, Mouse
Form	Liquid
Purification	Protein A/G purification

Isotype	IgG1, kappa
Recommend Usage	Flow Cytometry Western Blot The optimal working dilution should be determined by the end user.
Storage Buffer	In PBS, pH 7.4 (50% glycerol, 0.1% BSA and 0.02% sodium azide).
Storage Instruction	Store at -20°C.
Note	This product contains sodium azide: a POISONOUS AND HAZARDOUS SUBSTANCE which should be handled by trained staff only.

Applications

- Western Blot (Cell lysate)

Western Blot analysis of 293T cell lysate with ATF2 (phospho T71) monoclonal antibody, clone G3 (Cat # MAB18798). Lane 1: untreated or Lane 2: treated with UV.

- Flow Cytometry

Flow cytometric analysis of Jurkat cells with ATF2 (phospho T71) monoclonal antibody, clone G3 (Cat # MAB18798). Secondary antibody only negative control (blue) or untreated (red) or treated with anisomycin (green).

Gene Info — ATF2

Entrez GeneID	1386
Gene Name	ATF2
Gene Alias	CRE-BP1, CREB2, HB16, MGC111558, TREB7
Gene Description	activating transcription factor 2
Omim ID	123811
Gene Ontology	Hyperlink
Gene Summary	This gene encodes a transcription factor that is a member of the leucine zipper family of DNA binding proteins. This protein binds to the cAMP-responsive element (CRE), an octameric palindromic sequence. The protein forms a homodimer or heterodimer with c-Jun and stimulates CRE-dependent transcription. The protein is also a histone acetyltransferase (HAT) that specifically acetylates histones H2B and H4 in vitro; thus it may represent a class of sequence-specific factors that activate transcription by direct effects on chromatin components. Additional transcript variants have been identified but their biological validity has not been determined. [provided by RefSeq]

Other Designations

OTTHUMP00000163262|activating transcription factor 2 splice variant ATF2-var2|cAMP responsive element binding protein 2, formerly

Pathway

- [MAPK signaling pathway](#)

Disease

- [Bipolar Disorder](#)
- [Cardiovascular Diseases](#)
- [Diabetes Mellitus](#)
- [Edema](#)
- [Genetic Predisposition to Disease](#)
- [Schizophrenia](#)
- [Tobacco Use Disorder](#)