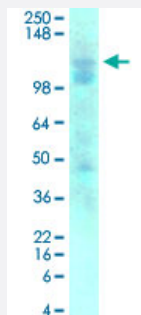


# Gabbr1 monoclonal antibody, clone S93A-49 (RPE)

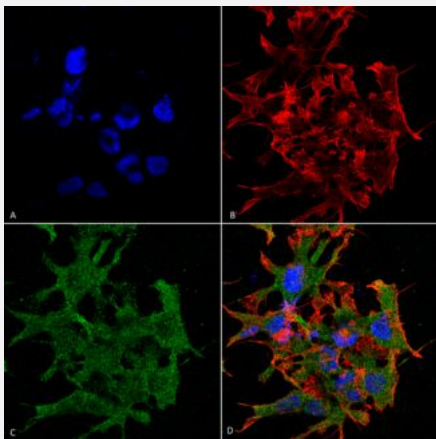
Catalog # MAB18286      Size 100 ug

## Applications



### Western Blot (Tissue lysate)

Western Blot analysis of rat brain membrane lysate with Gabbr1 monoclonal antibody, clone S93A-49 (RPE) (Cat # MAB18286).



### Immunocytochemistry

Immunocytochemical staining of SK-N-BE with Gabbr1 monoclonal antibody, clone S93A-49 (RPE) (Cat # MAB18286). (A) DAPI (blue) nuclear stain (B) Phalloidin Texas Red F-Actin stain (C) Gabbr1 Antibody and (D) Composite.

## Specification

<b>Product Description</b>	Mouse monoclonal antibody raised against partial recombinant rat Gabbr1.
<b>Immunogen</b>	Recombinant protein corresponding to amino acids 873-977 at C-terminus of rat Gabbr1.
<b>Host</b>	Mouse
<b>Reactivity</b>	Rat
<b>Form</b>	Liquid

Conjugation	RPE
Purification	Protein G Purification
Isotype	IgG1
Recommend Usage	Immunocytochemistry Immunofluorescence Immunohistochemistry (Formalin/PFA-fixed paraffin-embedded sections) Western Blot (1:1000) The optimal working dilution should be determined by the end user.
Storage Buffer	In PBS, pH 7.4 (50% glycerol, 0.09% sodium azide).
Storage Instruction	Store at -20°C.
Note	This product contains sodium azide: a POISONOUS AND HAZARDOUS SUBSTANCE which should be handled by trained staff only.

## Applications

- Western Blot (Tissue lysate)

Western Blot analysis of rat brain membrane lysate with Gabbr1 monoclonal antibody, clone S93A-49 (RPE) (Cat # MAB18286).

- Immunocytochemistry

Immunocytochemical staining of SK-N-BE with Gabbr1 monoclonal antibody, clone S93A-49 (RPE) (Cat # MAB18286). (A) DAPI (blue) nuclear stain (B) Phalloidin Texas Red F-Actin stain (C) Gabbr1 Antibody and (D) Composite.

- Immunofluorescence

## Gene Info — Gabbr1

Entrez GeneID	<a href="#">81657</a>
Protein Accession#	<a href="#">Q9Z0U4</a>
Gene Name	Gabbr1
Gene Alias	-
Gene Description	gamma-aminobutyric acid (GABA) B receptor 1
Gene Ontology	<a href="#">Hyperlink</a>

**Other Designations**gamma-aminobutyric acid type B receptor

---