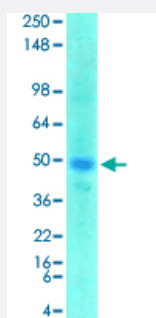


Slc38a1 monoclonal antibody, clone S104-32 (ATTO 488)

Catalog # MAB18254

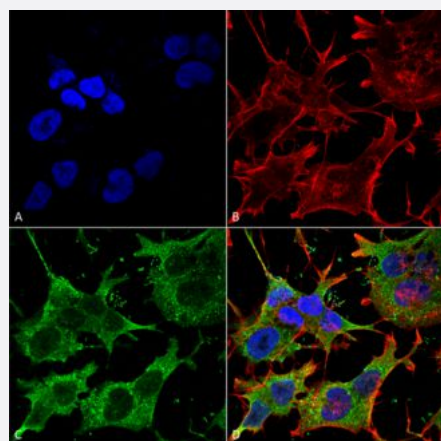
Size 100 ug

Applications



Western Blot (Tissue lysate)

Western Blot analysis of rat brain membrane lysate with Slc38a1 monoclonal antibody, clone S104-32 (ATTO 488) (Cat # MAB18254).



Immunocytochemistry

Immunocytochemical staining of SK-N-BE with Slc38a1 monoclonal antibody, clone S104-32 (ATTO 488) (Cat # MAB18254). (A) DAPI (blue) nuclear stain (B) Phalloidin Texas Red F-Actin stain (C) Slc38a1 Antibody and (D) Composite.

Specification

Product Description	Mouse monoclonal antibody raised against partial recombinant rat Slc38a1.
Immunogen	Recombinant protein corresponding to amino acids 1-63 of rat Slc38a1.
Host	Mouse
Reactivity	Rat
Form	Liquid

Conjugation	ATTO 488
Purification	Protein G Purification
Isotype	IgG1
Recommend Usage	Immunocytochemistry Immunofluorescence Immunohistochemistry (Formalin/PFA-fixed paraffin-embedded sections) Western Blot (1:1000) The optimal working dilution should be determined by the end user.
Storage Buffer	In PBS, pH 7.4 (50% glycerol, 0.09% sodium azide).
Storage Instruction	Store at -20°C.
Note	This product contains sodium azide: a POISONOUS AND HAZARDOUS SUBSTANCE which should be handled by trained staff only.

Applications

- Western Blot (Tissue lysate)

Western Blot analysis of rat brain membrane lysate with Slc38a1 monoclonal antibody, clone S104-32 (ATTO 488) (Cat # MAB18254).

- Immunohistochemistry (Formalin/PFA-fixed paraffin-embedded sections)

- Immunocytochemistry

Immunocytochemical staining of SK-N-BE with Slc38a1 monoclonal antibody, clone S104-32 (ATTO 488) (Cat # MAB18254).
(A) DAPI (blue) nuclear stain (B) Phalloidin Texas Red F-Actin stain (C) Slc38a1 Antibody and (D) Composite.

- Immunofluorescence

Gene Info — Slc38a1

Entrez GeneID	170567
Protein Accession#	Q9JM15
Gene Name	Slc38a1
Gene Alias	Ata1, GlnT, Sat1
Gene Description	solute carrier family 38, member 1

Gene Ontology[Hyperlink](#)**Gene Summary**

O

Other Designations

amino acid transporter system A1