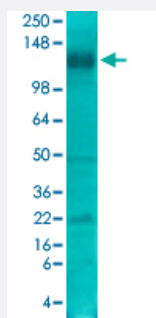


# Slc12a5 monoclonal antibody, clone S1-12 (PerCP)

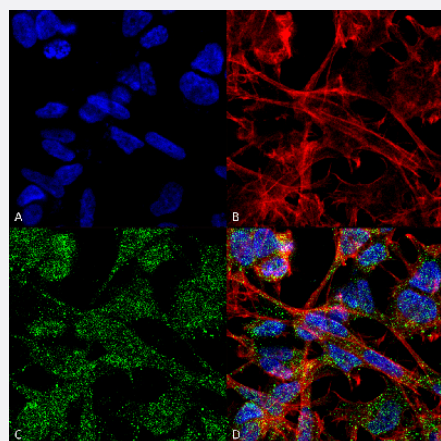
Catalog # MAB18187      Size 100 ug

## Applications



### Western Blot (Tissue lysate)

Western Blot analysis of rat brain membrane lysate with Slc12a5 monoclonal antibody, clone S1-12 (PerCP) (Cat # MAB18187).



### Immunocytochemistry

Immunocytochemical staining of SK-N-BE with Slc12a5 monoclonal antibody, clone S1-12 (PerCP) (Cat # MAB18187). (A) DAPI (blue) nuclear stain (B) Phalloidin Texas Red F-Actin stain (C) Slc12a5 Antibody and (D) Composite.

## Specification

<b>Product Description</b>	Mouse monoclonal antibody raised against partial recombinant rat Slc12a5.
<b>Immunogen</b>	Recombinant protein corresponding to amino acids 932-1043 of rat Slc12a5.
<b>Host</b>	Mouse
<b>Reactivity</b>	Human, Rat
<b>Form</b>	Liquid

Conjugation	PerCP
Purification	Protein G purification
Isotype	IgG2a
Recommend Usage	Immunocytochemistry (1:100) Immunofluorescence (1:100) Immunohistochemistry (Formalin/PFA-fixed paraffin-embedded sections) (1:300) Immunoprecipitation Western Blot (1:1000) The optimal working dilution should be determined by the end user.
Storage Buffer	In PBS, pH 7.4 (50% glycerol, 0.09% sodium azide).
Storage Instruction	Store at -20°C.
Note	This product contains sodium azide: a POISONOUS AND HAZARDOUS SUBSTANCE which should be handled by trained staff only.

## Applications

- Western Blot (Tissue lysate)

Western Blot analysis of rat brain membrane lysate with Slc12a5 monoclonal antibody, clone S1-12 (PerCP) (Cat # MAB18187).

- Immunohistochemistry (Formalin/PFA-fixed paraffin-embedded sections)

- Immunocytochemistry

Immunocytochemical staining of SK-N-BE with Slc12a5 monoclonal antibody, clone S1-12 (PerCP) (Cat # MAB18187). (A) DAPI (blue) nuclear stain (B) Phalloidin Texas Red F-Actin stain (C) Slc12a5 Antibody and (D) Composite.

- Immunofluorescence

- Immunoprecipitation

## Gene Info — Slc12a5

Entrez GeneID	<a href="#">171373</a>
Protein Accession#	<a href="#">Q63633</a>
Gene Name	Slc12a5

Gene Alias	Kcc2
Gene Description	solute carrier family 12 (potassium-chloride transporter), member 5
Gene Ontology	<a href="#">Hyperlink</a>
Gene Summary	O
Other Designations	neuronal-specific K-Cl cotransporter solute carrier family 12, member 5