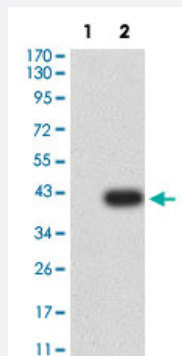


CD3G monoclonal antibody, clone 5B7F9

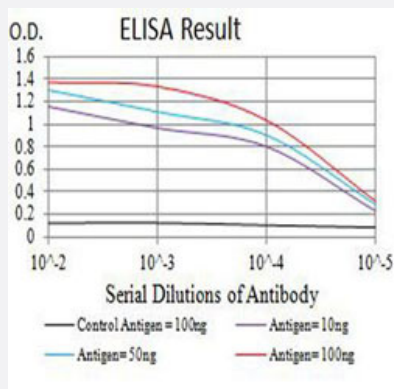
Catalog # MAB17993 Size 100 ug

Applications



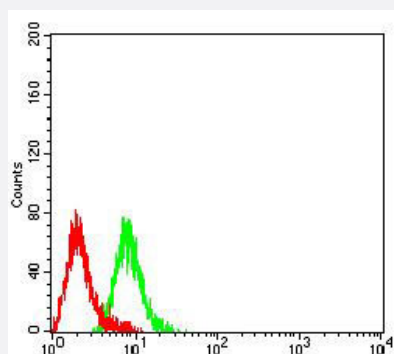
Western Blot (Transfected lysate)

Western Blot analysis of Lane 1: HEK293 and Lane 2: CD3G-hlgGFc transfected HEK293 cell lysates with CD3G monoclonal antibody, clone 5B7F9 (Cat # MAB17993).



Enzyme-linked Immunoabsorbent Assay

ELISA analysis with CD3G monoclonal antibody, clone 5B7F9 (Cat # MAB17993).



Flow Cytometry

Flow cytometric analysis of Raji cells with CD3G monoclonal antibody, clone 5B7F9 (Cat # MAB17993) (Green). Red: Negative Control.

Specification

Product Description	Mouse monoclonal antibody raised against partial recombinant human CD3G.
Immunogen	Recombinant protein corresponding to amino acids 23-116 of human CD3G.
Host	Mouse
Theoretical MW (kDa)	20.5
Reactivity	Human
Form	Liquid
Isotype	IgG1
Recommend Usage	ELISA (1:10000) Flow Cytometry (1:200-1:400) Western Blot (1:100-1:500) The optimal working dilution should be determined by the end user.
Storage Buffer	In PBS (0.05% sodium azide).
Storage Instruction	Store at 4°C. For long term storage store at -20°C. Aliquot to avoid repeated freezing and thawing.
Note	This product contains sodium azide: a POISONOUS AND HAZARDOUS SUBSTANCE which should be handled by trained staff only.

Applications

- Western Blot (Transfected lysate)

Western Blot analysis of Lane 1: HEK293 and Lane 2: CD3G-hlgGfc transfected HEK293 cell lysates with CD3G monoclonal antibody, clone 5B7F9 (Cat # MAB17993).

- Enzyme-linked Immunoabsorbent Assay

ELISA analysis with CD3G monoclonal antibody, clone 5B7F9 (Cat # MAB17993).

- Flow Cytometry

Flow cytometric analysis of Raji cells with CD3G monoclonal antibody, clone 5B7F9 (Cat # MAB17993) (Green). Red: Negative Control.

Gene Info — CD3G

Entrez GeneID [917](#)

Protein Accession# [P09693](#)

Gene Name	CD3G
Gene Alias	CD3-GAMMA, FLJ17620, FLJ17664, FLJ79544, FLJ94613, MGC138597, T3G
Gene Description	CD3g molecule, gamma (CD3-TCR complex)
Omim ID	186740
Gene Ontology	Hyperlink
Gene Summary	<p>The protein encoded by this gene is the CD3-gamma polypeptide, which together with CD3-epsilon, -delta and -zeta, and the T-cell receptor alpha/beta and gamma/delta heterodimers, forms the T-cell receptor-CD3 complex. This complex plays an important role in coupling antigen recognition to several intracellular signal-transduction pathways. The genes encoding the epsilon, gamma and delta polypeptides are located in the same cluster on chromosome 11. Defects in this gene are associated with T cell immunodeficiency. [provided by RefSeq]</p>
Other Designations	CD3G antigen, gamma polypeptide CD3g antigen, gamma polypeptide (TiT3 complex) T-cell antigen receptor complex, gamma subunit of T3 T-cell receptor T3 gamma chain T-cell surface glycoprotein CD3 gamma chain

Pathway

- [Hematopoietic cell lineage](#)
- [T cell receptor signaling pathway](#)

Disease

- [Arthritis](#)
- [Celiac Disease](#)
- [Genetic Predisposition to Disease](#)