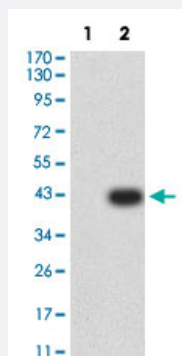


ATG3 monoclonal antibody, clone 2C10A12

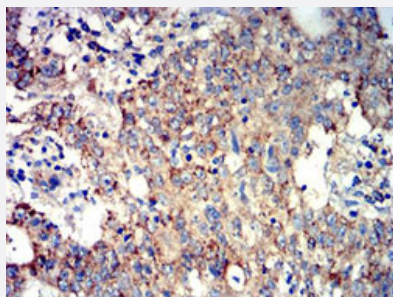
Catalog # MAB17913 Size 100 ug

Applications



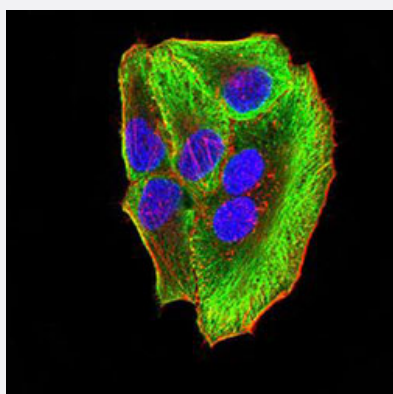
Western Blot (Transfected lysate)

Western Blot analysis of Lane 1: HEK293 and Lane 2: ATG3-hlgGfc transfected HEK293 cell lysates with ATG3 monoclonal antibody, clone 2C10A12 (Cat # MAB17913).



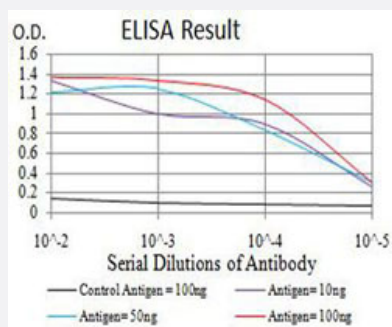
Immunohistochemistry (Formalin/PFA-fixed paraffin-embedded sections)

Immunohistochemical staining (Formalin-fixed paraffin-embedded sections) of human stomach carcinoma with ATG3 monoclonal antibody, clone 2C10A12 (Cat # MAB17913).



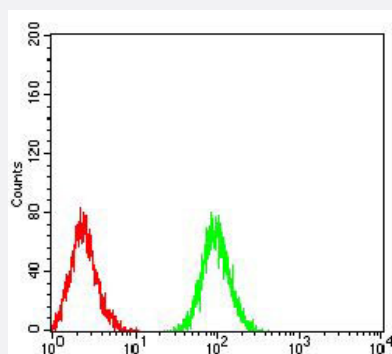
Immunofluorescence

Immunofluorescent staining of SMMC-7721 cells with ATG3 monoclonal antibody, clone 2C10A12 (Cat # MAB17913) (Green). Blue: DRAQ5 fluorescent DNA dye. Red: Actin filaments have been labeled with Alexa Fluor- 555 phalloidin.



Enzyme-linked Immunoabsorbent Assay

ELISA analysis with ATG3 monoclonal antibody, clone 2C10A12 (Cat # MAB17913).



Flow Cytometry

Flow cytometric analysis of Jurkat cells with ATG3 monoclonal antibody, clone 2C10A12 (Cat # MAB17913) (Green). Red: Negative Control.

Specification

Product Description Mouse monoclonal antibody raised against partial recombinant human ATG3.

Immunogen Recombinant protein corresponding to amino acids 1-100 of human ATG3.

Host Mouse

Theoretical MW (kDa) 35.9

Reactivity Human

Form Liquid

Isotype IgG1

Recommend Usage

- ELISA (1:10000)
- Flow Cytometry (1:200-1:400)
- Immunofluorescence (1:200-1:1000)
- Immunohistochemistry (Formalin/PFA-fixed paraffin-embedded sections)
- Western Blot (1:100-1:500)
- The optimal working dilution should be determined by the end user.

Storage Buffer In PBS (0.05% sodium azide).

Storage Instruction

- Store at 4°C. For long term storage store at -20°C.
- Aliquot to avoid repeated freezing and thawing.

Note

This product contains sodium azide: a POISONOUS AND HAZARDOUS SUBSTANCE which should be handled by trained staff only.

Applications

- Western Blot (Transfected lysate)

Western Blot analysis of Lane 1: HEK293 and Lane 2: ATG3-hlgGfc transfected HEK293 cell lysates with ATG3 monoclonal antibody, clone 2C10A12 (Cat # MAB17913).

- Immunohistochemistry (Formalin/PFA-fixed paraffin-embedded sections)

Immunohistochemical staining (Formalin-fixed paraffin-embedded sections) of human stomach carcinoma with ATG3 monoclonal antibody, clone 2C10A12 (Cat # MAB17913).

- Immunofluorescence

Immunofluorescent staining of SMMC-7721 cells with ATG3 monoclonal antibody, clone 2C10A12 (Cat # MAB17913) (Green). Blue: DRAQ5 fluorescent DNA dye. Red: Actin filaments have been labeled with Alexa Fluor- 555 phalloidin.

- Enzyme-linked Immunoabsorbent Assay

ELISA analysis with ATG3 monoclonal antibody, clone 2C10A12 (Cat # MAB17913).

- Flow Cytometry

Flow cytometric analysis of Jurkat cells with ATG3 monoclonal antibody, clone 2C10A12 (Cat # MAB17913) (Green). Red: Negative Control.

Gene Info — ATG3

Entrez GeneID	64422
---------------	-----------------------

Protein Accession#	Q9NT62
--------------------	------------------------

Gene Name	ATG3
-----------	------

Gene Alias	APG3, APG3-LIKE, APG3L, DKFZp564M1178, FLJ22125, MGC15201, PC3-96
------------	---

Gene Description	ATG3 autophagy related 3 homolog (S. cerevisiae)
------------------	--

Omim ID	609606
---------	------------------------

Gene Ontology	Hyperlink
---------------	---------------------------

Gene Summary

Autophagy is a process of bulk degradation of cytoplasmic components by the lysosome or vacuole. Human ATG3 displays the same enzymatic characteristics in vitro as yeast Apg3, a protein-conjugating enzyme essential for autophagy (Tanida et al., 2002 [PubMed 11825910]).[supplied by OMIM]

Other Designations

2610016C12Rik|APG3 autophagy 3-like|Apg3p|autophagy Apg3p/Aut1p-like

Pathway

- [Regulation of autophagy](#)

Disease

- [Huntington Disease](#)