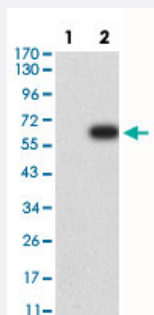


AOF2 monoclonal antibody, clone 3F9D2

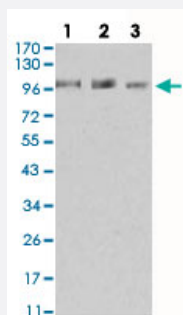
Catalog # MAB17847 Size 100 ug

Applications



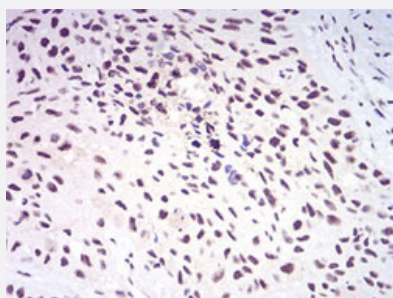
Western Blot (Transfected lysate)

Western Blot (Transfected lysate) analysis of (1) HEK293, (2) AOF2-hlgGFc transfected HEK293 cell lysate.



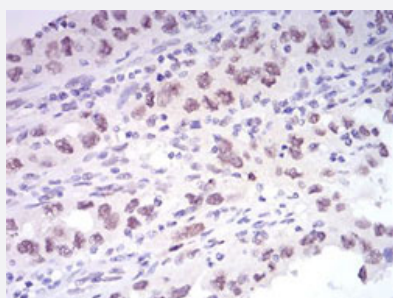
Western Blot

Western Blot analysis of (1) K562, (2) Jurkat, and (3) HeLa cell lysate.



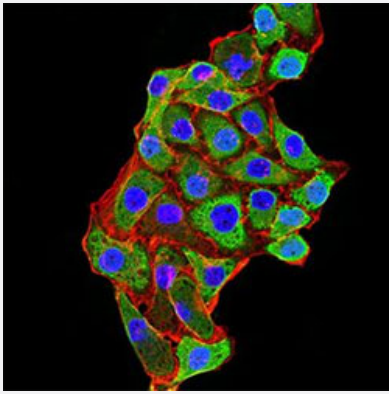
Immunohistochemistry (Formalin/PFA-fixed paraffin-embedded sections)

Immunohistochemical staining of esophageal cancer tissues with DAB staining.



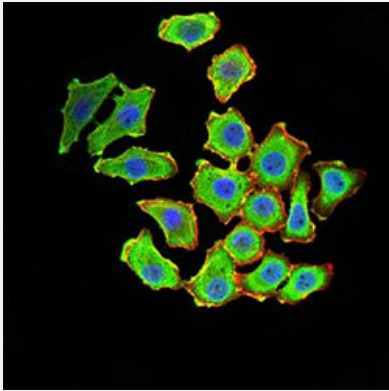
Immunohistochemistry (Formalin/PFA-fixed paraffin-embedded sections)

Immunohistochemical staining of endometrial cancer tissues with DAB staining.



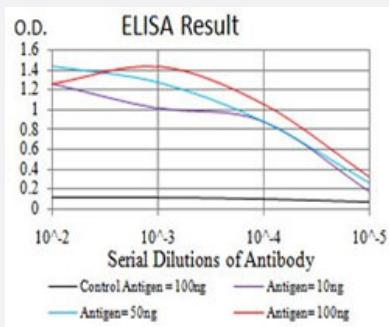
Immunofluorescence

Immunofluorescent staining of MCF-7 cell line with antibody (green). Blue: DRAQ5 fluorescent DNA dye. Red: Actin filaments have been labeled with Alexa Fluor-555 phalloidin.



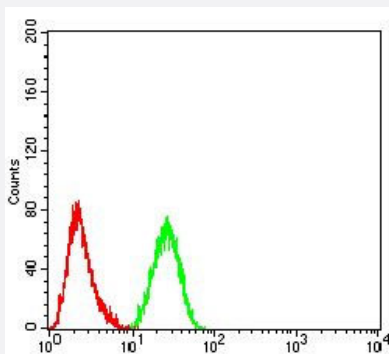
Immunofluorescence

Immunofluorescent staining of HL-7702 cell line with antibody (green). Blue: DRAQ5 fluorescent DNA dye. Red: Actin filaments have been labeled with Alexa Fluor-555 phalloidin.



Enzyme-linked Immunoabsorbent Assay

ELISA analysis of AOF2 monoclonal antibody.



Flow Cytometry

Flow cytometric analysis of HeLa cells using AOF2 mouse monoclonal antibody (green) and negative control (red).

Specification

Product Description

Mouse monoclonal antibody raised against recombinant human AOF2.

Immunogen	Recombinant protein corresponding to amino acids 55-263 of human AOF2 from <i>E. coli</i> .
Host	Mouse
Theoretical MW (kDa)	93
Reactivity	Human
Form	Liquid
Isotype	IgG1
Recommend Usage	ELISA (1:10000) Flow Cytometry (1:200-400) Immunofluorescence (1:200-1000) Immunohistochemistry (Formalin/PFA-fixed paraffin-embedded sections) Western Blot (1:100-1:500) The optimal working dilution should be determined by the end user.
Storage Buffer	In PBS (0.05% sodium azide).
Storage Instruction	Store at 4°C. For long term storage store at -20°C. Aliquot to avoid repeated freezing and thawing.
Note	This product contains sodium azide: a POISONOUS AND HAZARDOUS SUBSTANCE which should be handled by trained staff only.

Applications

- Western Blot (Transfected lysate)

Western Blot (Transfected lysate) analysis of (1) HEK293, (2) AOF2-hlgGFc transfected HEK293 cell lysate.

- Western Blot

Western Blot analysis of (1) K562, (2) Jurkat, and (3) HeLa cell lysate.

- Immunohistochemistry (Formalin/PFA-fixed paraffin-embedded sections)

Immunohistochemical staining of esophageal cancer tissues with DAB staining.

- Immunohistochemistry (Formalin/PFA-fixed paraffin-embedded sections)

Immunohistochemical staining of endometrial cancer tissues with DAB staining.

- Immunofluorescence

Immunofluorescent staining of MCF-7 cell line with antibody (green). Blue: DRAQ5 fluorescent DNA dye. Red: Actin filaments have been labeled with Alexa Fluor-555 phalloidin.

- Immunofluorescence

Immunofluorescent staining of HL-7702 cell line with antibody (green). Blue: DRAQ5 fluorescent DNA dye. Red: Actin filaments have been labeled with Alexa Fluor-555 phalloidin.

- Enzyme-linked Immunoabsorbent Assay

ELISA analysis of AOF2 monoclonal antibody.

- Flow Cytometry

Flow cytometric analysis of HeLa cells using AOF2 mouse monoclonal antibody (green) and negative control (red).

Gene Info — AOF2

Entrez GeneID [23028](#)

Gene Name AOF2

Gene Alias BHC110, KDM1, KIAA0601, LSD1

Gene Description amine oxidase (flavin containing) domain 2

Omim ID [609132](#)

Gene Ontology [Hyperlink](#)

Gene Summary This gene encodes a nuclear protein containing a SWIRM domain, a FAD-binding motif, and an amine oxidase domain. This protein is a component of several histone deacetylase complexes, though it silences genes by functioning as a histone demethylase. Alternative splicing results in multiple transcript variants. [provided by RefSeq]

Other Designations BRAF35-HDAC complex protein BHC110|FAD-binding protein BRAF35-HDAC complex, 110 kDa subunit|lysine (K)-specific demethylase 1|lysine-specific histone demethylase 1