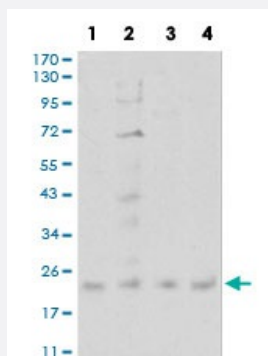


CIRBP monoclonal antibody, clone 6E12B3

Catalog # MAB17836

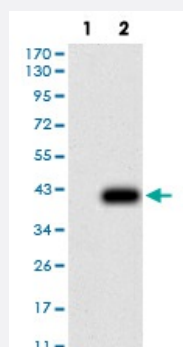
Size 100 ug

Applications



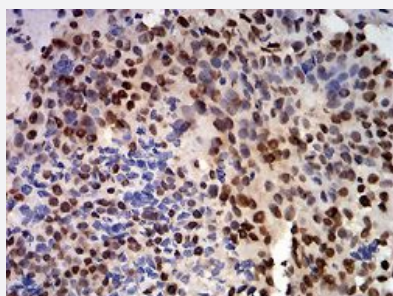
Western Blot (Cell lysate)

Western blot analysis of (1) SW480 cell, (2) PC-3 cell, (3) A431 cell, (4) U251 cell with CIRBP monoclonal antibody.



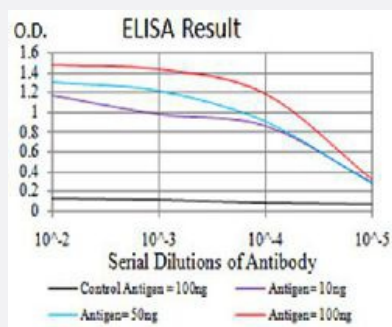
Western Blot (Transfected lysate)

Western blot analysis of (1) HEK293 cells, (2) CIRBP-hlgGfC transfected HEK293 cell lysate with CIRBP monoclonal antibody.



Immunohistochemistry (Formalin/PFA-fixed paraffin-embedded sections)

Immunohistochemical staining of paraffin-embedded bladder cancer tissue with CIRBP monoclonal antibody.



Enzyme-linked Immunoabsorbent Assay

ELISA analysis of CIRBP monoclonal antibody, clone 6E12B3.

Specification

Product Description	Mouse monoclonal antibody raised against recombinant human CIRBP.
Immunogen	Recombinant protein corresponding to amino acids 1-90 of human CIRBP from <i>E. coli</i> .
Host	Mouse
Theoretical MW (kDa)	155
Reactivity	Human
Form	Liquid
Isotype	IgG1
Recommend Usage	ELISA (1:10000) Flow Cytometry Immunocytochemistry Immunohistochemistry (1:200-1:1000) Western Blot (1:500-1:2000) The optimal working dilution should be determined by the end user.
Storage Buffer	In PBS (0.05% sodium azide).
Storage Instruction	Store at 4°C. For long term storage store at -20°C. Aliquot to avoid repeated freezing and thawing.
Note	This product contains sodium azide: a POISONOUS AND HAZARDOUS SUBSTANCE which should be handled by trained staff only.

Applications

- Western Blot (Cell lysate)

Western blot analysis of (1) SW480 cell, (2) PC-3 cell, (3) A431 cell, (4) U251 cell with CIRBP monoclonal antibody.

- Western Blot (Transfected lysate)

Western blot analysis of (1) HEK293 cells, (2) CIRBP-hlgGFc transfected HEK293 cell lysate with CIRBP monoclonal antibody.

- Immunohistochemistry (Formalin/PFA-fixed paraffin-embedded sections)

Immunohistochemical staining of paraffin-embedded bladder cancer tissue with CIRBP monoclonal antibody.

- Enzyme-linked Immunoabsorbent Assay

ELISA analysis of CIRBP monoclonal antibody, clone 6E12B3.

Gene Info — CIRBP

Entrez GeneID	1153
Gene Name	CIRBP
Gene Alias	CIRP
Gene Description	cold inducible RNA binding protein
Omim ID	602649
Gene Ontology	Hyperlink
Other Designations	Cold-inducible RNA-binding protein cold inducible RNA-binding protein glycine-rich RNA binding protein