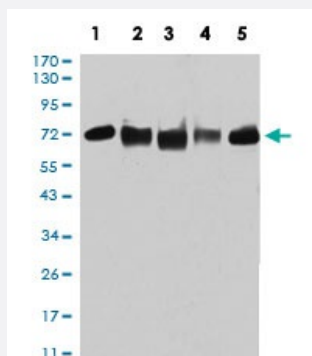


# ASH2L monoclonal antibody, clone 5B5B12

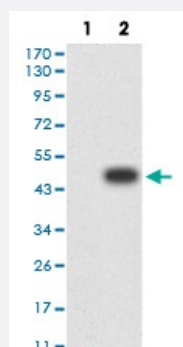
Catalog # MAB17824      Size 100 ug

## Applications



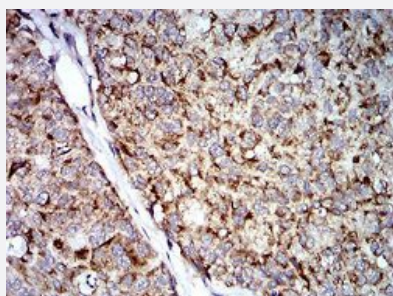
### Western Blot (Cell lysate)

Western blot analysis of (1) MCF-7 cell, (2) HeLa cell, (3) K562 cell, (4) A549 cell, (5) MOLT4 cell with ASH2L monoclonal antibody.



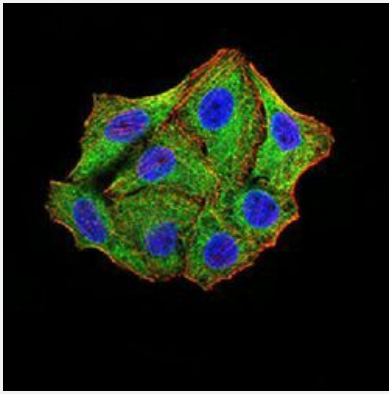
### Western Blot (Transfected lysate)

Western blot analysis of (1) HEK293 cells, (2) ASH2L-hlgGFc transfected HEK293 cell lysate with ASH2L monoclonal antibody.



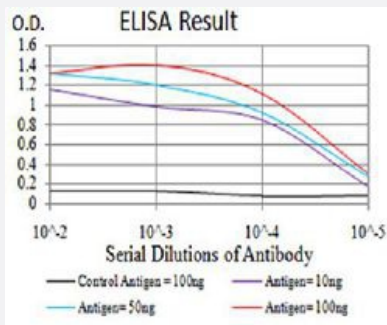
### Immunohistochemistry (Formalin/PFA-fixed paraffin-embedded sections)

Immunohistochemical staining of paraffin-embedded bladder cancer tissue with ASH2L monoclonal antibody.



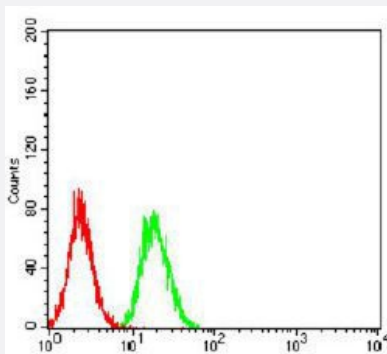
## Immunocytochemistry

Immunocytochemical staining of HeLa cells with ASH2L monoclonal antibody (green). DRAQ5 fluorescent DNA dye (blue). Actin filaments labeled with Alexa Fluor-555 phalloidin (red).



## Enzyme-linked Immunoabsorbent Assay

ELISA analysis of ASH2L monoclonal antibody, clone 5B5B12.



## Flow Cytometry

Flow cytometric analysis of HeLa cells with ASH2L monoclonal antibody (green) and negative control (red).

## Specification

Product Description	Mouse monoclonal antibody raised against recombinant human ASH2L.
Immunogen	Recombinant protein corresponding to amino acids 211-360 of human ASH2L from <i>E. coli</i> .
Host	Mouse
Theoretical MW (kDa)	68.7
Reactivity	Human
Form	Liquid
Isotype	IgG2b

<b>Recommend Usage</b>	ELISA (1:10000) Flow Cytometry (1:200-1:400) Immunocytochemistry (1:50-1:250) Immunohistochemistry (1:200-1:1000) Western Blot (1:500-1:2000) The optimal working dilution should be determined by the end user.
<b>Storage Buffer</b>	In PBS (0.05% sodium azide).
<b>Storage Instruction</b>	Store at 4°C. For long term storage store at -20°C. Aliquot to avoid repeated freezing and thawing.
<b>Note</b>	This product contains sodium azide: a POISONOUS AND HAZARDOUS SUBSTANCE which should be handled by trained staff only.

## Applications

- Western Blot (Cell lysate)

Western blot analysis of (1) MCF-7 cell, (2) HeLa cell, (3) K562 cell, (4) A549 cell, (5) MOLT4 cell with ASH2L monoclonal antibody.

- Western Blot (Transfected lysate)

Western blot analysis of (1) HEK293 cells, (2) ASH2L-hlgGfc transfected HEK293 cell lysate with ASH2L monoclonal antibody.

- Immunohistochemistry (Formalin/PFA-fixed paraffin-embedded sections)

Immunohistochemical staining of paraffin-embedded bladder cancer tissue with ASH2L monoclonal antibody.

- Immunocytochemistry

Immunocytochemical staining of HeLa cells with ASH2L monoclonal antibody (green). DRAQ5 fluorescent DNA dye (blue). Actin filaments labeled with Alexa Fluor-555 phalloidin (red).

- Enzyme-linked Immunoabsorbent Assay

ELISA analysis of ASH2L monoclonal antibody, clone 5B5B12.

- Flow Cytometry

Flow cytometric analysis of HeLa cells with ASH2L monoclonal antibody (green) and negative control (red).

## Gene Info — ASH2L

**Entrez GeneID** [9070](#)

**Gene Name** ASH2L

Gene Alias	ASH2, ASH2L1, ASH2L2, Bre2
Gene Description	ash2 (absent, small, or homeotic)-like (Drosophila)
Omim ID	<a href="#">604782</a>
Gene Ontology	<a href="#">Hyperlink</a>
Gene Summary	small
Other Designations	ash2-like