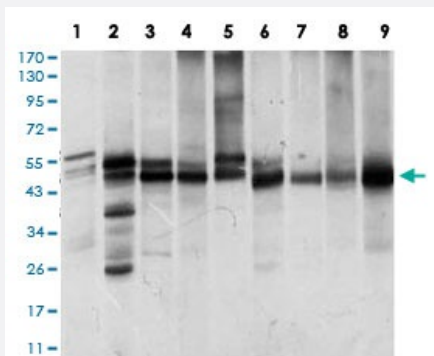


ILK monoclonal antibody, clone 3A9

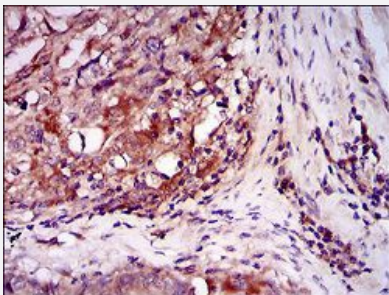
Catalog # MAB17745 Size 100 uL

Applications



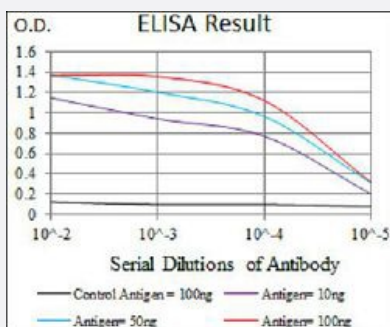
Western Blot (Cell lysate)

Western blot analysis of (1) Jurkat cell, (2) NIH/3T3, (3) HeLa cell, (4) PC-12 cell, (5) C6 cell, (6) COS7 cell, (7) Raji cell, (8) K562 cell, (9) MCF-7 cell with ILK monoclonal antibody.



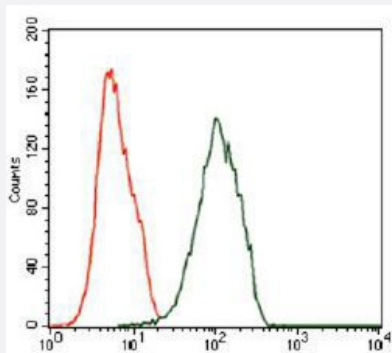
Immunohistochemistry (Formalin/PFA-fixed paraffin-embedded sections)

Immunohistochemical staining of paraffin-embedded esophageal cancer tissue with ILK monoclonal antibody.



Enzyme-linked Immunoabsorbent Assay

ELISA analysis of ILK monoclonal antibody, clone 3A9.



Flow Cytometry

Flow cytometric analysis of Jurkat cells with ILK monoclonal antibody (green) and negative control (red).

Specification

Product Description	Mouse monoclonal antibody raised against recombinant human ILK.
Immunogen	Recombinant protein corresponding to amino acids 97-244 of human ILK from <i>E. coli</i> .
Host	Mouse
Theoretical MW (kDa)	51.4
Reactivity	Human, Monkey, Mouse
Form	Liquid
Isotype	IgG1
Recommend Usage	ELISA (1:10000) Flow Cytometry (1:200-1:400) Immunocytochemistry Immunohistochemistry (1:200-1:1000) Western Blot (1:500-1:2000) The optimal working dilution should be determined by the end user.
Storage Buffer	In ascites (0.03% sodium azide).
Storage Instruction	Store at 4°C. For long term storage store at -20°C. Aliquot to avoid repeated freezing and thawing.
Note	This product contains sodium azide: a POISONOUS AND HAZARDOUS SUBSTANCE which should be handled by trained staff only.

Applications

- Western Blot (Cell lysate)

Western blot analysis of (1) Jurkat cell, (2) NIH/3T3, (3) HeLa cell, (4) PC-12 cell, (5) C6 cell, (6) COS7 cell, (7) Raji cell, (8) K562 cell, (9) MCF-7 cell with ILK monoclonal antibody.

- Immunohistochemistry (Formalin/PFA-fixed paraffin-embedded sections)

Immunohistochemical staining of paraffin-embedded esophageal cancer tissue with ILK monoclonal antibody.

- Enzyme-linked Immunoabsorbent Assay

ELISA analysis of ILK monoclonal antibody, clone 3A9.

- Flow Cytometry

Flow cytometric analysis of Jurkat cells with ILK monoclonal antibody (green) and negative control (red).

Gene Info — ILK

Entrez GeneID [3611](#)

Gene Name ILK

Gene Alias DKFZp686F1765, P59

Gene Description integrin-linked kinase

Omim ID [602366](#)

Gene Ontology [Hyperlink](#)

Gene Summary Transduction of extracellular matrix signals through integrins influences intracellular and extracellular functions, and appears to require interaction of integrin cytoplasmic domains with cellular proteins. Integrin-linked kinase (ILK), interacts with the cytoplasmic domain of beta-1 integrin. This gene encodes a serine/threonine protein kinase with 4 ankyrin-like repeats, which associates with the cytoplasmic domain of beta integrins and acts as a proximal receptor kinase regulating integrin-mediated signal transduction. Multiple alternatively spliced transcript variants encoding the same protein have been found for this gene. [provided by RefSeq]

Other Designations -

Pathway

- [Endometrial cancer](#)

- [Focal adhesion](#)

- [PPAR signaling pathway](#)