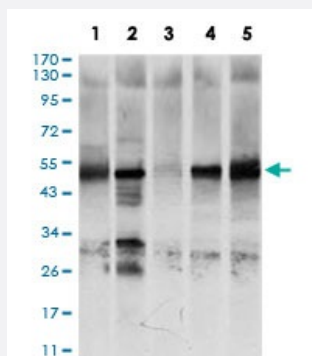


NR6A1 monoclonal antibody, clone 4G8

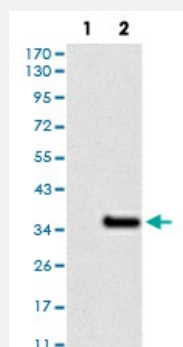
Catalog # MAB17737 Size 100 ug

Applications



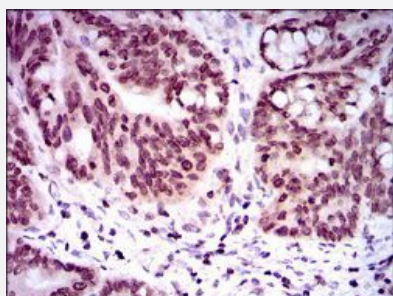
Western Blot (Cell lysate)

Western blot analysis of (1) K562 cell, (2) NTERA-2 cell, (3) HEK293 cell, (4) HUVE-12 cell, (5) HeLa cell with NR6A1 monoclonal antibody.



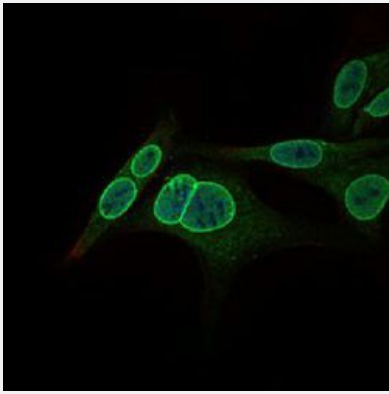
Western Blot (Transfected lysate)

Western blot analysis of (1) HEK293 cells, (2) NR6A1-hlgGfc transfected HEK293 cell lysate with NR6A1 monoclonal antibody.



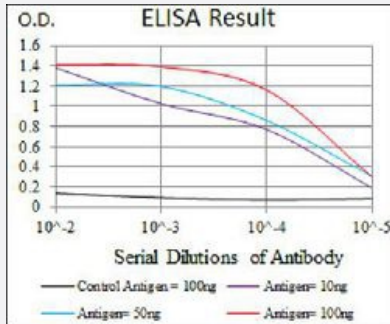
Immunohistochemistry (Formalin/PFA-fixed paraffin-embedded sections)

Immunohistochemical staining of paraffin-embedded rectum cancer tissue with NR6A1 monoclonal antibody.



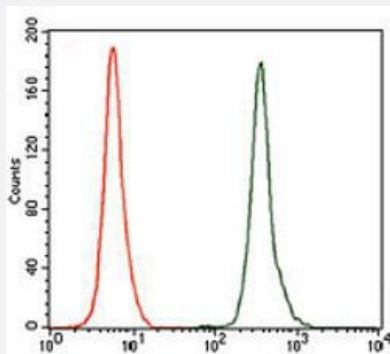
Immunocytochemistry

Immunocytochemical staining of HepG2 cells with NR6A1 monoclonal antibody (green). DRAQ5 fluorescent DNA dye (blue). Actin filaments labeled with Alexa Fluor-555 phalloidin (red).



Enzyme-linked Immunoabsorbent Assay

ELISA analysis of NR6A1 monoclonal antibody, clone 4G8.



Flow Cytometry

Flow cytometric analysis of K562 cells with NR6A1 monoclonal antibody (green) and negative control (red).

Specification

Product Description	Mouse monoclonal antibody raised against recombinant human NR6A1.
Immunogen	Recombinant protein corresponding to amino acids 65-118 of human NR6A1 from <i>E. coli</i> .
Host	Mouse
Theoretical MW (kDa)	54.3
Reactivity	Human
Form	Liquid
Isotype	IgG1

Recommend Usage	ELISA (1:10000) Flow Cytometry (1:200-1:400) Immunocytochemistry (1:400) Immunohistochemistry (1:200-1:1000) Western Blot (1:500-1:2000) The optimal working dilution should be determined by the end user.
Storage Buffer	In PBS (0.05% sodium azide).
Storage Instruction	Store at 4°C. For long term storage store at -20°C. Aliquot to avoid repeated freezing and thawing.
Note	This product contains sodium azide: a POISONOUS AND HAZARDOUS SUBSTANCE which should be handled by trained staff only.

Applications

- Western Blot (Cell lysate)

Western blot analysis of (1) K562 cell, (2) NTERA-2 cell, (3) HEK293 cell, (4) HUVE-12 cell, (5) HeLa cell with NR6A1 monoclonal antibody.

- Western Blot (Transfected lysate)

Western blot analysis of (1) HEK293 cells, (2) NR6A1-hlgGfc transfected HEK293 cell lysate with NR6A1 monoclonal antibody.

- Immunohistochemistry (Formalin/PFA-fixed paraffin-embedded sections)

Immunohistochemical staining of paraffin-embedded rectum cancer tissue with NR6A1 monoclonal antibody.

- Immunocytochemistry

Immunocytochemical staining of HepG2 cells with NR6A1 monoclonal antibody (green). DRAQ5 fluorescent DNA dye (blue). Actin filaments labeled with Alexa Fluor-555 phalloidin (red).

- Enzyme-linked Immunoabsorbent Assay

ELISA analysis of NR6A1 monoclonal antibody, clone 4G8.

- Flow Cytometry

Flow cytometric analysis of K562 cells with NR6A1 monoclonal antibody (green) and negative control (red).

Gene Info — NR6A1

Entrez GeneID [2649](#)

Gene Name NR6A1

Gene Alias	GCNF, GCNF1, NR61, RTR
Gene Description	nuclear receptor subfamily 6, group A, member 1
Omim ID	602778
Gene Ontology	Hyperlink
Gene Summary	This gene encodes an orphan nuclear receptor which is a member of the nuclear hormone receptor family. Its expression pattern suggests that it may be involved in neurogenesis and germ cell development. The protein can homodimerize and bind DNA, but in vivo targets have not been identified. The gene expresses at least alternatively spliced transcript variants. [provided by RefSeq]
Other Designations	germ cell nuclear factor retinoic acid receptor-related testis-associated receptor

Publication Reference

- [Let-7a-5p abrogates progression of papillary thyroid carcinoma cells by decreasing nuclear receptor subfamily 6 group a member 1-mediated lipogenesis.](#)

Tao Zhao, Jinghui Sun, Xiangdong Lu, Lingling Liu, Lin Chen, Wei Zhao, Bin Zhou.

Journal of Biochemical and Molecular Toxicology 2023 Oct; 31:e23572.

Application: WB, IHC, Human, BC-PAP cells, TPC1 cells

Disease

- [Cleft Lip](#)
- [Cleft Palate](#)
- [Tobacco Use Disorder](#)