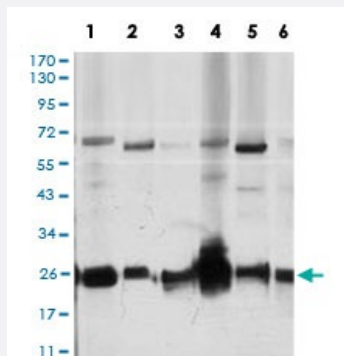


ARHGDIA monoclonal antibody, clone 2G3

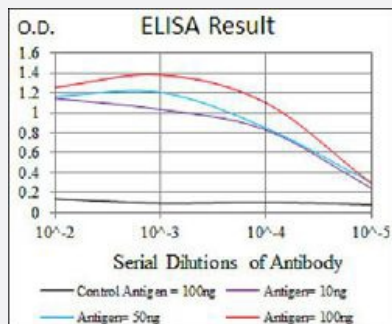
Catalog # MAB17734 Size 100 ug

Applications



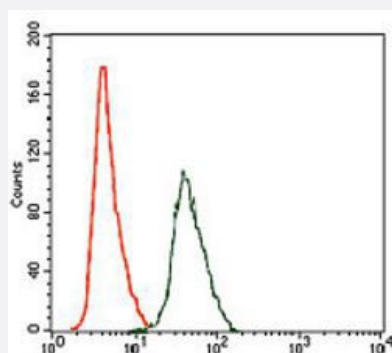
Western Blot (Cell lysate)

Western blot analysis of (1) Jurkat cell, (2) HeLa cell, (3) NIH/3T3 cell, (4) C6 cell, (5) K562 cell, (6) COS7 cell with ARHGDIA monoclonal antibody.



Enzyme-linked Immunoabsorbent Assay

ELISA analysis of ARHGDIA monoclonal antibody, clone 2G3.



Flow Cytometry

Flow cytometric analysis of HeLa cells with ARHGDIA monoclonal antibody (green) and negative control (red).

Specification

Product Description

Mouse monoclonal antibody raised against recombinant human ARHGDIA.

Immunogen	Recombinant protein corresponding to amino acids 1-204 of human ARHGDIA from <i>E. coli</i> .
Host	Mouse
Theoretical MW (kDa)	26
Reactivity	Human, Monkey, Mouse
Form	Liquid
Isotype	IgG1
Recommend Usage	ELISA (1:10000) Flow Cytometry (1:200-1:400) Immunocytochemistry (1:200-1:1000) Immunohistochemistry Western Blot (1:500-1:2000) The optimal working dilution should be determined by the end user.
Storage Buffer	In PBS (0.05% sodium azide).
Storage Instruction	Store at 4°C. For long term storage store at -20°C. Aliquot to avoid repeated freezing and thawing.
Note	This product contains sodium azide: a POISONOUS AND HAZARDOUS SUBSTANCE which should be handled by trained staff only.

Applications

- Western Blot (Cell lysate)

Western blot analysis of (1) Jurkat cell, (2) HeLa cell, (3) NIH/3T3 cell, (4) C6 cell, (5) K562 cell, (6) COS7 cell with ARHGDIA monoclonal antibody.

- Enzyme-linked Immunoabsorbent Assay

ELISA analysis of ARHGDIA monoclonal antibody, clone 2G3.

- Flow Cytometry

Flow cytometric analysis of HeLa cells with ARHGDIA monoclonal antibody (green) and negative control (red).

Gene Info — ARHGDIA

Entrez GeneID

[396](#)

Gene Name

ARHGDIA

Gene Alias	GDIA1, MGC117248, RHOGDI, RHOGDI-1
Gene Description	Rho GDP dissociation inhibitor (GDI) alpha
Omim ID	601925
Gene Ontology	Hyperlink
Gene Summary	<p>Aplysia Ras-related homologs (ARHs), also called Rho genes, belong to the RAS gene superfamily encoding small guanine nucleotide exchange (GTP/GDP) factors. The ARH proteins may be kept in the inactive, GDP-bound state by interaction with GDP dissociation inhibitors, such as ARH GDIA (Leffers et al., 1993 [PubMed 8262133]).[supplied by OMIM</p>
Other Designations	-

Pathway

- [Neurotrophin signaling pathway](#)