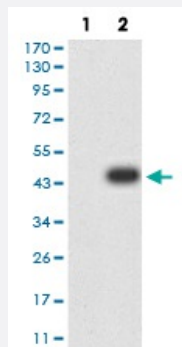


ATG7 monoclonal antibody, clone 7D3E5

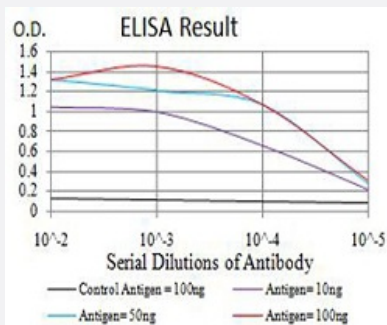
Catalog # MAB17516 Size 100 ug

Applications



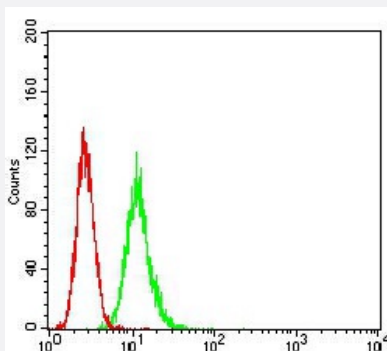
Western Blot (Transfected lysate)

Western blot analysis of (1) HEK293 cells, (2) ATG7-hlgGfc transfected HEK293 cell lysate.



Enzyme-linked Immunoabsorbent Assay

ELISA analysis of ATG7 monoclonal antibody, clone 7D3E5.



Flow Cytometry

Flow cytometric analysis of Hela cells with ATG7 monoclonal antibody (green) and negative control (red).

Specification

Product Description

Mouse monoclonal antibody raised against recombinant human ATG7.

Immunogen	Recombinant protein corresponding to amino acid 558-703 of human ATG7 from <i>E. coli</i> .
Host	Mouse
Theoretical MW (kDa)	78
Reactivity	Human
Form	Liquid
Isotype	IgG2b
Recommend Usage	ELISA (1:10000) Western Blot (1:500-1:2000) Immunocytochemistry Flow Cytometry (1:200-1:400) Immunohistochemistry The optimal working dilution should be determined by the end user.
Storage Buffer	In PBS (0.05% sodium azide).
Storage Instruction	Store at 4°C. For long term storage store at -20°C. Aliquot to avoid repeated freezing and thawing.
Note	This product contains sodium azide: a POISONOUS AND HAZARDOUS SUBSTANCE which should be handled by trained staff only.

Applications

- Western Blot (Transfected lysate)

Western blot analysis of (1) HEK293 cells, (2) ATG7-hlgGfc transfected HEK293 cell lysate.

- Enzyme-linked Immunoabsorbent Assay

ELISA analysis of ATG7 monoclonal antibody, clone 7D3E5.

- Flow Cytometry

Flow cytometric analysis of Hela cells with ATG7 monoclonal antibody (green) and negative control (red).

Gene Info — ATG7

Entrez GeneID	10533
Gene Name	ATG7
Gene Alias	APG7-LIKE, APG7L, DKFZp434N0735, GSA7

Gene Description	ATG7 autophagy related 7 homolog (S. cerevisiae)
Omim ID	608760
Gene Ontology	Hyperlink
Gene Summary	This gene was identified based on homology to Pichia pastoris GSA7 and Saccharomyces cerevisiae APG7. In the yeast, the protein appears to be required for fusion of peroxisomal and vacuolar membranes. The protein shows homology to the ATP-binding and catalytic sites of the E1 ubiquitin activating enzymes. [provided by RefSeq]
Other Designations	APG7 autophagy 7-like ubiquitin activating enzyme E1-like protein

Pathway

- [Regulation of autophagy](#)

Disease

- [Disease Progression](#)
- [Disease Susceptibility](#)
- [HIV Infections](#)
- [Huntington Disease](#)
- [Tobacco Use Disorder](#)