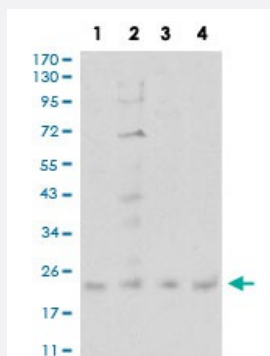


# CIRBP monoclonal antibody, clone 6E12B3

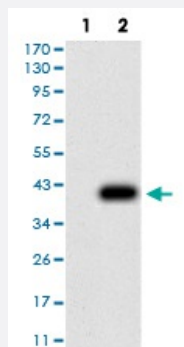
Catalog # MAB17493      Size 100 ug

## Applications



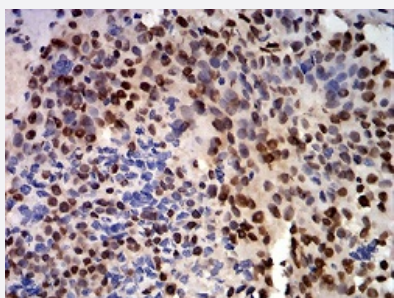
### Western Blot (Cell lysate)

Western blot analysis of (1) SW480 cell, (2) PC-3 cell, (3) A431 cell, (4) U251 cell with CIRBP monoclonal antibody.



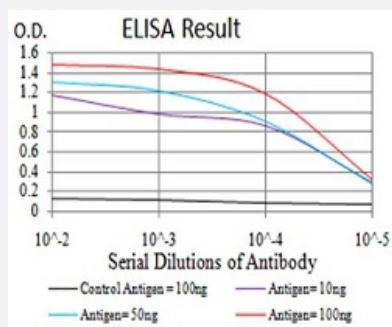
### Western Blot (Transfected lysate)

Western blot analysis of (1) HEK293 cells, (2) CIRBP-hlgGfc transfected HEK293 cell lysate.



### Immunohistochemistry (Formalin/PFA-fixed paraffin-embedded sections)

Immunohistochemical staining of paraffin-embedded bladder cancer tissues with CIRBP monoclonal antibody.



## Enzyme-linked Immunoabsorbent Assay

ELISA analysis of CIRBP monoclonal antibody, clone 6E12B3.

## Specification

<b>Product Description</b>	Mouse monoclonal antibody raised against recombinant human CIRBP.
<b>Immunogen</b>	Recombinant protein corresponding to amino acid 1-90 of human CIRBP from <i>E. coli</i> .
<b>Host</b>	Mouse
<b>Theoretical MW (kDa)</b>	18.6
<b>Reactivity</b>	Human
<b>Form</b>	Liquid
<b>Isotype</b>	IgG1
<b>Recommend Usage</b>	ELISA (1:10000) Western Blot (1:500-1:2000) Immunohistochemistry (1:200-1:1000) Immunocytochemistry Flow Cytometry The optimal working dilution should be determined by the end user.
<b>Storage Buffer</b>	In PBS (0.05% sodium azide).
<b>Storage Instruction</b>	Store at 4°C. For long term storage store at -20°C. Aliquot to avoid repeated freezing and thawing.
<b>Note</b>	This product contains sodium azide: a POISONOUS AND HAZARDOUS SUBSTANCE which should be handled by trained staff only.

## Applications

- Western Blot (Cell lysate)

Western blot analysis of (1) SW480 cell, (2) PC-3 cell, (3) A431 cell, (4) U251 cell with CIRBP monoclonal antibody.

- Western Blot (Transfected lysate)

Western blot analysis of (1) HEK293 cells, (2) CIRBP-hlgGfc transfected HEK293 cell lysate.

- Immunohistochemistry (Formalin/PFA-fixed paraffin-embedded sections)

Immunohistochemical staining of paraffin-embedded bladder cancer tissues with CIRBP monoclonal antibody.

- Enzyme-linked Immunoabsorbent Assay

ELISA analysis of CIRBP monoclonal antibody, clone 6E12B3.

## Gene Info — CIRBP

Entrez GeneID	<a href="#">1153</a>
Gene Name	CIRBP
Gene Alias	CIRP
Gene Description	cold inducible RNA binding protein
Omim ID	<a href="#">602649</a>
Gene Ontology	<a href="#">Hyperlink</a>
Other Designations	Cold-inducible RNA-binding protein cold inducible RNA-binding protein glycine-rich RNA binding protein