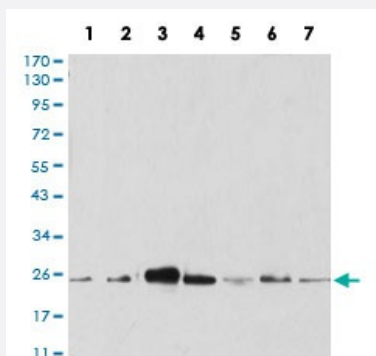


ANAPC10 monoclonal antibody, clone 8F1D10

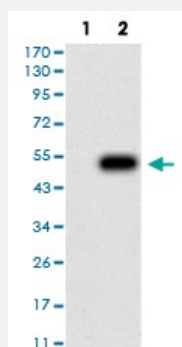
Catalog # MAB17487 Size 100 ug

Applications



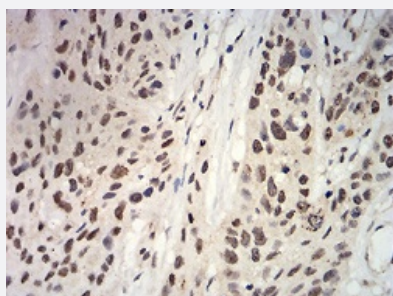
Western Blot (Cell lysate)

Western blot analysis of (1) Hela cell, (2) MCF-7 cell, (3) SK-Br-3 cell, (4) A431 cell, (5) HEK293 cell, (6) A549 cell, (7) SPC-A-1 cell with ANAPC10 monoclonal antibody.



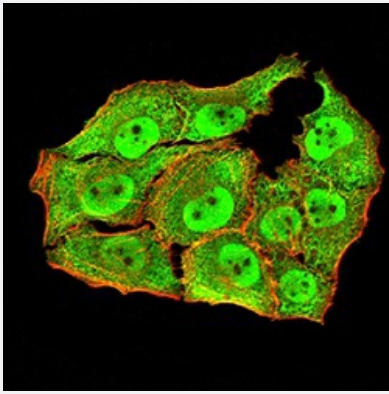
Western Blot (Transfected lysate)

Western blot analysis of (1) HEK293 cells, (2) ANAPC10-hlgGfC transfected HEK293 cell lysate.



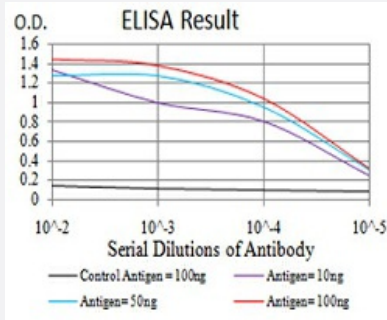
Immunohistochemistry (Formalin/PFA-fixed paraffin-embedded sections)

Immunohistochemical staining of paraffin-embedded esophageal cancer tissues with ANAPC10 monoclonal antibody.



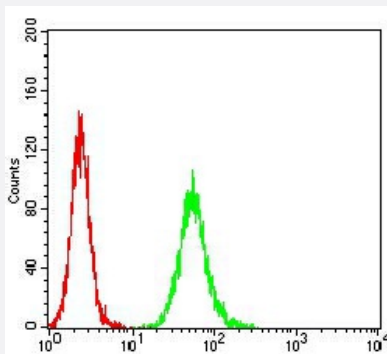
Immunocytochemistry

Immunocytochemical staining of HeLa cells with ANAPC10 monoclonal antibody (green). DRAQ5 fluorescent DNA dye (blue). Actin filaments labeled with Alexa Fluor-555 phalloidin (red).



Enzyme-linked Immunoabsorbent Assay

ELISA analysis of ANAPC10 monoclonal antibody, clone 8F1D10.



Flow Cytometry

Flow cytometric analysis of HeLa cells with ANAPC10 monoclonal antibody (green) and negative control (red).

Specification

Product Description	Mouse monoclonal antibody raised against recombinant human ANAPC10.
Immunogen	Recombinant protein corresponding to amino acid 1-185 of human ANAPC10 from <i>E. coli</i> .
Host	Mouse
Theoretical MW (kDa)	21.3
Reactivity	Human
Form	Liquid
Isotype	IgG1

Recommend Usage	ELISA (1:10000) Western Blot (1:500-1:2000) Immunohistochemistry (1:200-1:1000) Immunocytochemistry (1:200-1:1000) Flow Cytometry (1:200-1:400) The optimal working dilution should be determined by the end user.
Storage Buffer	In PBS (0.05% sodium azide).
Storage Instruction	Store at 4°C. For long term storage store at -20°C. Aliquot to avoid repeated freezing and thawing.
Note	This product contains sodium azide: a POISONOUS AND HAZARDOUS SUBSTANCE which should be handled by trained staff only.

Applications

- Western Blot (Cell lysate)

Western blot analysis of (1) Hela cell, (2) MCF-7 cell, (3) SK-Br-3 cell, (4) A431 cell, (5) HEK293 cell, (6) A549 cell, (7) SPC-A-1 cell with ANAPC10 monoclonal antibody.

- Western Blot (Transfected lysate)

Western blot analysis of (1) HEK293 cells, (2) ANAPC10-hlgGfc transfected HEK293 cell lysate.

- Immunohistochemistry (Formalin/PFA-fixed paraffin-embedded sections)

Immunohistochemical staining of paraffin-embedded esophageal cancer tissues with ANAPC10 monoclonal antibody.

- Immunocytochemistry

Immunocytochemical staining of HeLa cells with ANAPC10 monoclonal antibody (green). DRAQ5 fluorescent DNA dye (blue). Actin filaments labeled with Alexa Fluor-555 phalloidin (red).

- Enzyme-linked Immunoabsorbent Assay

ELISA analysis of ANAPC10 monoclonal antibody, clone 8F1D10.

- Flow Cytometry

Flow cytometric analysis of Hela cells with ANAPC10 monoclonal antibody (green) and negative control (red).

Gene Info — ANAPC10

Entrez GeneID [10393](#)

Gene Name ANAPC10

Gene Alias	APC10, DKFZp564L0562, DOC1
Gene Description	anaphase promoting complex subunit 10
Gene Ontology	Hyperlink
Other Designations	-

Pathway

- [Cell cycle](#)
- [Ubiquitin mediated proteolysis](#)