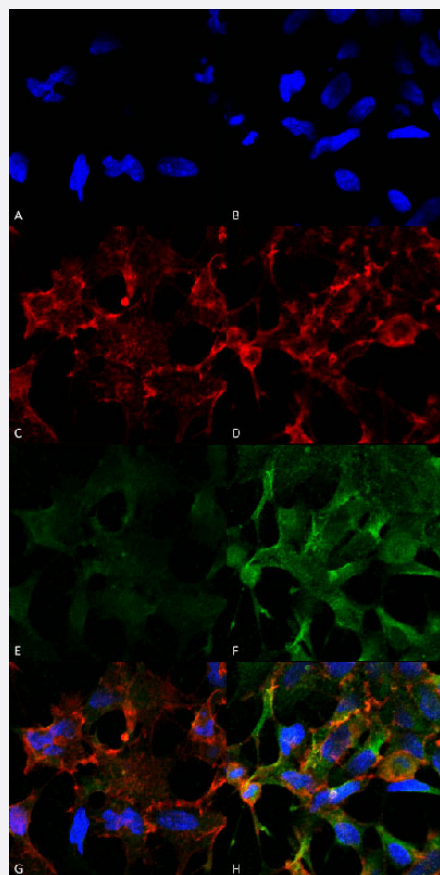


Acrolein monoclonal antibody, clone 2H2 (APC)

Catalog # MAB17383 Size 100 ug

Applications

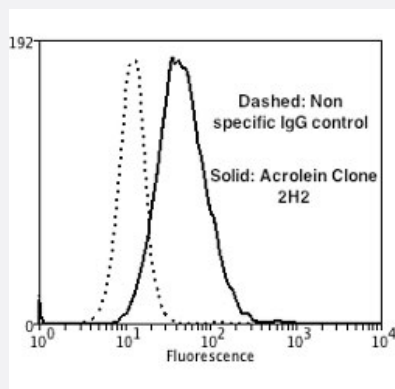


Immunocytochemistry

Immunocytochemical staining of HEK293 with Acrolein monoclonal antibody, clone 2H2 (APC) (Cat # MAB17383). (A, B) DAPI (blue) nuclear stain. (C, D) Phalloidin Alex Fluor 633 F-Actin stain. (E, F) Acrolein Antibody. (G, H) Composite. (A, C, E, G) Untreated and (B, D, F, H) Cells cultured overnight with 50 uM H₂O₂.

Flow Cytometry

Flow cytometric analysis of SH-SY5Y with Acrolein monoclonal antibody, clone 2H2 (APC) (Cat # MAB17383).



Specification

Product Description	Mouse monoclonal antibody raised against synthetic peptide of Acrolein.
Immunogen	Synthetic Acrolein modified Keyhole Limpet Hemocyanin (KLH).
Host	Mouse
Form	Liquid
Conjugation	APC
Purification	Protein G purification
Isotype	IgG1
Recommend Usage	ELISA (1:1000) Flow Cytometry Immunocytochemistry (1:50) Immunofluorescence (1:50) Western Blot (1:1000) The optimal working dilution should be determined by the end user.
Storage Buffer	In PBS, pH 7.4 (50% glycerol, 0.09% sodium azide).
Storage Instruction	Store at -20°C.
Note	This product contains sodium azide: a POISONOUS AND HAZARDOUS SUBSTANCE which should be handled by trained staff only.

Applications

- Western Blot

- Immunocytochemistry

Immunocytochemical staining of HEK293 with Acrolein monoclonal antibody, clone 2H2 (APC) (Cat # MAB17383). (A, B) DAPI (blue) nuclear stain. (C, D) Phalloidin Alex Fluor 633 F-Actin stain. (E, F) Acrolein Antibody. (G, H) Composite. (A, C, E, G) Untreated and (B, D, F, H) Cells cultured overnight with 50 μ M H₂O₂.

- Immunofluorescence

- Enzyme-linked Immunoabsorbent Assay

- Flow Cytometry

Flow cytometric analysis of SH-SY5Y with Acrolein monoclonal antibody, clone 2H2 (APC) (Cat # MAB17383).