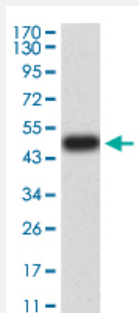


# RAB5A monoclonal antibody, clone 2E8B11

Catalog # MAB17298

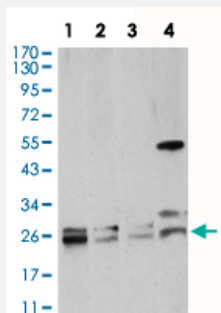
Size 100 ug

## Applications



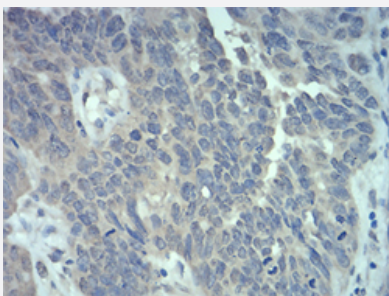
### Western Blot

Western Blot analysis of human RAB5A recombinant protein.



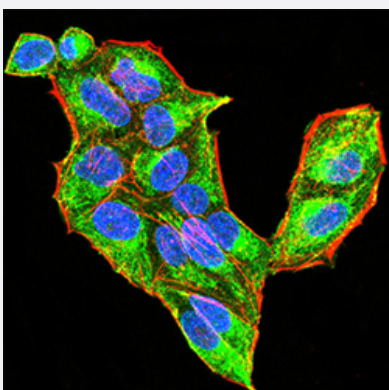
### Western Blot

Western Blot analysis of (1) K562, (2) HeLa, (3) Jurkat, and (4) HepG2 cell lysate.



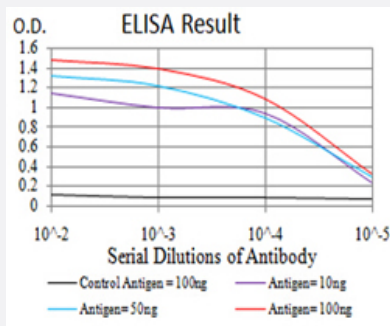
### Immunohistochemistry (Formalin/PFA-fixed paraffin-embedded sections)

Immunohistochemical staining of ovarian cancer tissues with DAB staining.



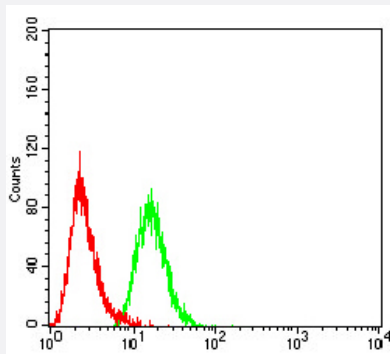
### Immunofluorescence

Immunofluorescent staining of HeLa cell line with antibody (green). DRAQ5 fluorescent DNA dye. Red: Actin filaments have been labeled with Alexa Fluor-555 phalloidin.



## Enzyme-linked Immunoabsorbent Assay

ELISA analysis of RAB5A monoclonal antibody.



## Flow Cytometry

Flow cytometric analysis of HeLa cells using RAB5A mouse monoclonal antibody (green) and negative control (red).

## Specification

Product Description	Mouse monoclonal antibody raised against recombinant human RAB5A.
Immunogen	Recombinant protein corresponding to amino acids 1-215 of human RAB5A from <i>E. coli</i> .
Host	Mouse
Theoretical MW (kDa)	23.7
Reactivity	Human
Form	Liquid
Isotype	IgG1
Recommend Usage	ELISA (1:10000) Flow Cytometry (1:200-400) Immunohistochemistry (Formalin/PFA-fixed paraffin-embedded sections) (1:200-1000) Immunofluorescence (1:200-1000) Western Blot (1:500-1:2000) The optimal working dilution should be determined by the end user.
Storage Buffer	In PBS (0.05% sodium azide).

**Storage Instruction**

Store at 4°C. For long term storage store at -20°C.  
Aliquot to avoid repeated freezing and thawing.

**Note**

This product contains sodium azide: a POISONOUS AND HAZARDOUS SUBSTANCE which should be handled by trained staff only.

## Applications

- Western Blot

Western Blot analysis of human RAB5A recombinant protein.

- Western Blot

Western Blot analysis of (1) K562, (2) HeLa, (3) Jurkat, and (4) HepG2 cell lysate.

- Immunohistochemistry (Formalin/PFA-fixed paraffin-embedded sections)

Immunohistochemical staining of ovarian cancer tissues with DAB staining.

- Immunofluorescence

Immunofluorescent staining of HeLa cell line with antibody (green). DRAQ5 fluorescent DNA dye. Red: Actin filaments have been labeled with Alexa Fluor-555 phalloidin.

- Enzyme-linked Immunoabsorbent Assay

ELISA analysis of RAB5A monoclonal antibody.

- Flow Cytometry

Flow cytometric analysis of HeLa cells using RAB5A mouse monoclonal antibody (green) and negative control (red).

## Gene Info — RAB5A

**Entrez GeneID**[5868](#)**Gene Name**

RAB5A

**Gene Alias**

RAB5

**Gene Description**

RAB5A, member RAS oncogene family

**Omim ID**[179512](#)**Gene Ontology**[Hyperlink](#)

**Gene Summary**

O

**Other Designations**

RAS-associated protein RAB5A

**Pathway**

- [Amyotrophic lateral sclerosis \(ALS\)](#)
- [Endocytosis](#)

**Disease**

- [Cardiovascular Diseases](#)
- [Diabetes Mellitus](#)
- [Edema](#)