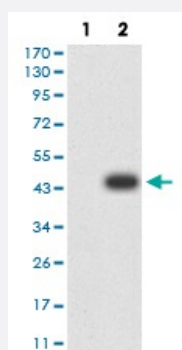


BUB1 monoclonal antibody, clone 1A11C7

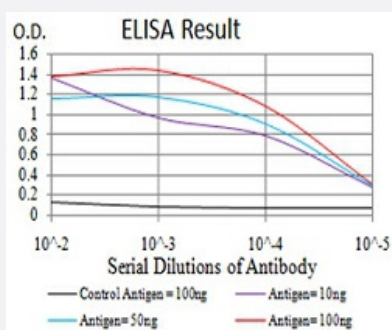
Catalog # MAB17249 Size 100 ug

Applications



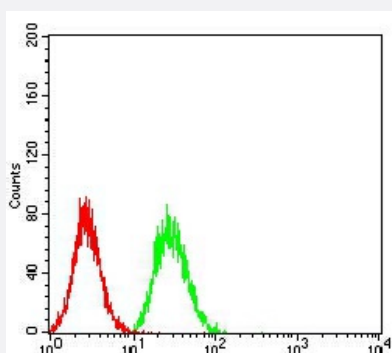
Western Blot (Transfected lysate)

Western Blot analysis of (1) HEK293 cells, (2) BUB1-hlgGfc transfected HEK293 cell lysate.



Enzyme-linked Immunoabsorbent Assay

ELISA analysis of BUB1 monoclonal antibody, clone 1A11C7.



Flow Cytometry

Flow cytometric analysis of HeLa cells with BUB1 monoclonal antibody (green) and negative control (red).

Specification

Product Description

Mouse monoclonal antibody raised against recombinant human BUB1.

Immunogen	Recombinant protein corresponding to amino acid 1-130 of human BUB1 from <i>E. coli</i> .
Host	Mouse
Theoretical MW (kDa)	122.4kDa
Reactivity	Human
Form	Liquid
Isotype	IgG1
Recommend Usage	ELISA (1:10000) Western Blot (1:500-1:2000) Immunohistochemistry Immunocytochemistry Flow Cytometry (1:200-1:400) The optimal working dilution should be determined by the end user.
Storage Buffer	In PBS (0.05% sodium azide).
Storage Instruction	Store at 4°C. For long term storage store at -20°C. Aliquot to avoid repeated freezing and thawing.
Note	This product contains sodium azide: a POISONOUS AND HAZARDOUS SUBSTANCE which should be handled by trained staff only.

Applications

- Western Blot (Transfected lysate)

Western Blot analysis of (1) HEK293 cells, (2) BUB1-hlgGfc transfected HEK293 cell lysate.

- Enzyme-linked Immunoabsorbent Assay

ELISA analysis of BUB1 monoclonal antibody, clone 1A11C7.

- Flow Cytometry

Flow cytometric analysis of HeLa cells with BUB1 monoclonal antibody (green) and negative control (red).

Gene Info — BUB1

Entrez GeneID	699
Gene Name	BUB1
Gene Alias	BUB1A, BUB1L, hBUB1

Gene Description	budding uninhibited by benzimidazoles 1 homolog (yeast)
Omim ID	602452
Gene Ontology	Hyperlink
Gene Summary	This gene encodes a kinase involved in spindle checkpoint function. The kinase functions in part by phosphorylating a member of the mitotic checkpoint complex and activating the spindle checkpoint. Mutations in this gene have been associated with aneuploidy and several forms of cancer. [provided by RefSeq]
Other Designations	BUB1 budding uninhibited by benzimidazoles 1 homolog budding uninhibited by benzimidazoles 1 mitotic spindle checkpoint kinase putative serine/threonine-protein kinase

Pathway

- [Cell cycle](#)

Disease

- [Alcoholism](#)
- [Breast cancer](#)
- [Breast Neoplasms](#)
- [Carcinoma](#)
- [Conduct Disorder](#)
- [Genetic Predisposition to Disease](#)
- [Ovarian Neoplasms](#)