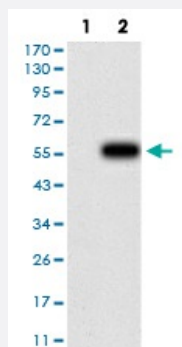


# CFHR5 monoclonal antibody, clone 3E1E10

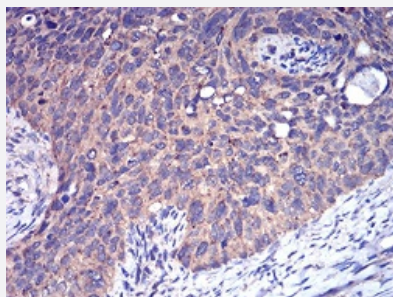
Catalog # MAB17191      Size 100 ug

## Applications



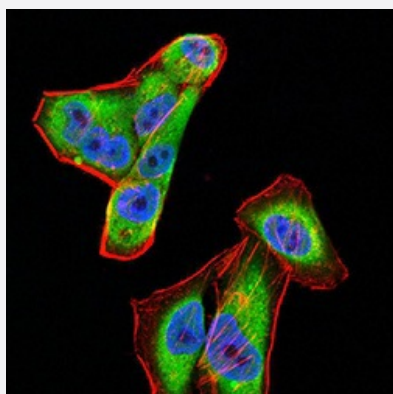
### Western Blot (Transfected lysate)

Western Blot analysis of (1) HEK293 cells, (2) CFHR5-hlgGfC transfected HEK293 cell lysate.



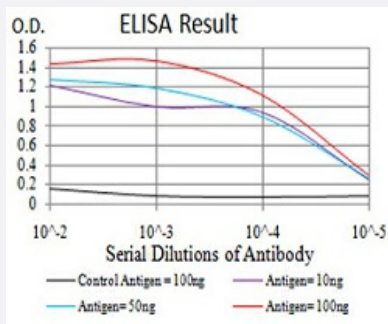
### Immunohistochemistry (Formalin/PFA-fixed paraffin-embedded sections)

Immunohistochemical staining of paraffin-embedded cervical cancer tissues with CFHR5 monoclonal antibody.



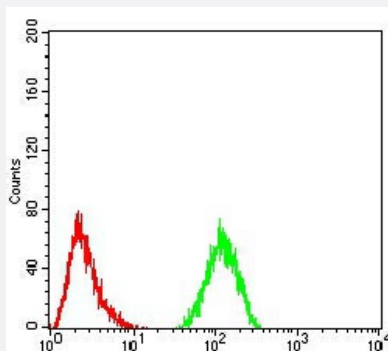
### Immunocytochemistry

Immunocytochemical staining of HeLa cells with CFHR5 monoclonal antibody (green). DRAQ5 fluorescent DNA dye (blue). Actin filaments have been labeled with Alexa Fluor-555 phalloidin (red).



## Enzyme-linked Immunoabsorbent Assay

ELISA analysis of CFHR5 monoclonal antibody, clone 3E1E10.



## Flow Cytometry

Flow cytometric analysis of HeLa cells with CFHR5 monoclonal antibody (green) and negative control (red).

## Specification

<b>Product Description</b>	Mouse monoclonal antibody raised against recombinant human CFHR5.
<b>Immunogen</b>	Recombinant protein corresponding to amino acid 344-569 of human CFHR5 from <i>E. coli</i> .
<b>Host</b>	Mouse
<b>Theoretical MW (kDa)</b>	64.4kDa
<b>Reactivity</b>	Human
<b>Form</b>	Liquid
<b>Isotype</b>	IgG1
<b>Recommend Usage</b>	ELISA (1:10000) Western Blot (1:500-1:2000) Immunohistochemistry (1:200-1:1000) Immunocytochemistry (1:200-1:1000) Flow Cytometry (1:200-1:400) The optimal working dilution should be determined by the end user.
<b>Storage Buffer</b>	In PBS (0.05% sodium azide).
<b>Storage Instruction</b>	Store at 4°C. For long term storage store at -20°C. Aliquot to avoid repeated freezing and thawing.

**Note**

This product contains sodium azide: a POISONOUS AND HAZARDOUS SUBSTANCE which should be handled by trained staff only.

## Applications

- Western Blot (Transfected lysate)

Western Blot analysis of (1) HEK293 cells, (2) CFHR5-hlgGfc transfected HEK293 cell lysate.

- Immunohistochemistry (Formalin/PFA-fixed paraffin-embedded sections)

Immunohistochemical staining of paraffin-embedded cervical cancer tissues with CFHR5 monoclonal antibody.

- Immunocytochemistry

Immunocytochemical staining of HeLa cells with CFHR5 monoclonal antibody (green). DRAQ5 fluorescent DNA dye (blue). Actin filaments have been labeled with Alexa Fluor- 555 phalloidin (red).

- Enzyme-linked Immunoabsorbent Assay

ELISA analysis of CFHR5 monoclonal antibody, clone 3E1E10.

- Flow Cytometry

Flow cytometric analysis of HeLa cells with CFHR5 monoclonal antibody (green) and negative control (red).

## Gene Info — CFHR5

Entrez GeneID	<a href="#">81494</a>
---------------	-----------------------

Gene Name	CFHR5
-----------	-------

Gene Alias	CFHL5, FHR-5, FHR5, FLJ10549, MGC133240
------------	---

Gene Description	complement factor H-related 5
------------------	-------------------------------

Omim ID	<a href="#">608593</a>
---------	------------------------

Gene Ontology	<a href="#">Hyperlink</a>
---------------	---------------------------

Other Designations	factor H-related protein 5
--------------------	----------------------------

## Disease

- [Genetic Predisposition to Disease](#)

- [Glomerulonephritis](#)
- [Hemolytic-Uremic Syndrome](#)
- [Lymphoma](#)
- [Macular Degeneration](#)