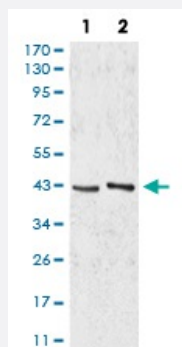


AIM2 monoclonal antibody, clone 7G12D1

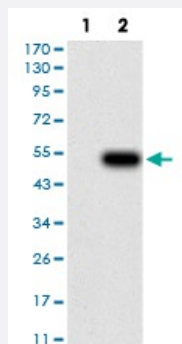
Catalog # MAB17173 Size 100 ug

Applications



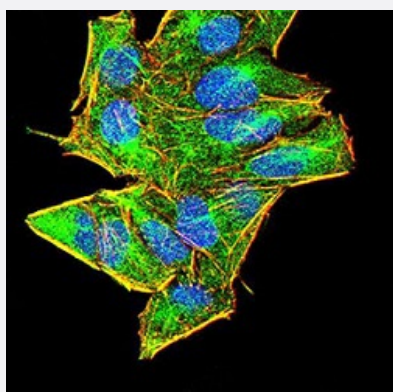
Western Blot (Cell lysate)

Western blot analysis of Lane 1: HepG2 cell; Lane 2: A549 cell with AIM2 monoclonal antibody.



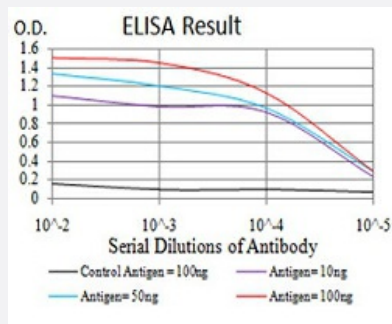
Western Blot (Transfected lysate)

Western Blot analysis of (1) HEK293 cells, (2) AIM2-hlgGFc transfected HEK293 cell lysate.



Immunocytochemistry

Immunocytochemical staining of HeLa cells with AIM2 monoclonal antibody (green). DRAQ5 fluorescent DNA dye (blue). Actin filaments have been labeled with Alexa Fluor- 555 phalloidin (red).



Enzyme-linked Immunoabsorbent Assay

ELISA analysis of AIM2 monoclonal antibody, clone 7G12D1.

Specification

Product Description	Mouse monoclonal antibody raised against recombinant human AIM2.
Immunogen	Recombinant protein corresponding to amino acid 1-195 of human AIM2 from <i>E. coli</i> .
Host	Mouse
Theoretical MW (kDa)	39kDa
Reactivity	Human
Form	Liquid
Isotype	IgG1
Recommend Usage	ELISA (1:10000) Western Blot (1:500-1:2000) Immunohistochemistry Immunocytochemistry (1:200-1:1000) Flow Cytometry The optimal working dilution should be determined by the end user.
Storage Buffer	In PBS (0.05% sodium azide).
Storage Instruction	Store at 4°C. For long term storage store at -20°C. Aliquot to avoid repeated freezing and thawing.
Note	This product contains sodium azide: a POISONOUS AND HAZARDOUS SUBSTANCE which should be handled by trained staff only.

Applications

- Western Blot (Cell lysate)

Western blot analysis of Lane 1: HepG2 cell; Lane 2: A549 cell with AIM2 monoclonal antibody.

- Western Blot (Transfected lysate)

Western Blot analysis of (1) HEK293 cells, (2) AIM2-hlgGfc transfected HEK293 cell lysate.

- Immunocytochemistry

Immunocytochemical staining of HeLa cells with AIM2 monoclonal antibody (green). DRAQ5 fluorescent DNA dye (blue). Actin filaments have been labeled with Alexa Fluor- 555 phalloidin (red).

- Enzyme-linked Immunoabsorbent Assay

ELISA analysis of AIM2 monoclonal antibody, clone 7G12D1.

Gene Info — AIM2

Entrez GeneID	9447
---------------	----------------------

Gene Name	AIM2
-----------	------

Gene Alias	PYHIN4
------------	--------

Gene Description	absent in melanoma 2
------------------	----------------------

Omim ID	604578
---------	------------------------

Gene Ontology	Hyperlink
---------------	---------------------------

Gene Summary	AIM2 is a member of the IFI202X /IFI16 family. It plays a putative role in tumorigenic reversion and may control cell proliferation. Interferon-gamma induces expression of AIM2. [provided by RefSeq]
--------------	--

Other Designations	OTTHUMP00000035296
--------------------	--------------------

Disease

- [Genetic Predisposition to Disease](#)

- [Lupus Erythematosus](#)