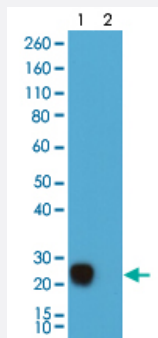


RecomAb™

# HA-Tag chimeric monoclonal antibody, clone RMH02

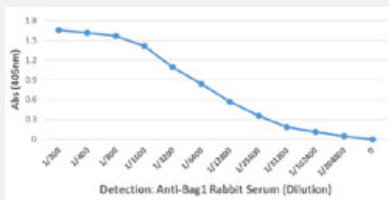
Catalog # MAB16932      Size 100 ug

## Applications



### Western Blot (Transfected lysate)

Western Blot (Transfected lysate) analysis of 293T cells (1) transfected with a DNA construct encoding HA-Tag KRas fusion protein, (2) untransfected a DNA construct encoding HA-Tag KRas fusion protein.



### Enzyme-linked Immunoabsorbent Assay

ELISA performed on whole lysate of LNCaP cells overexpressing HA-tag Bag1 protein.

ELISA analysis of chimeric human anti-HA-Tag antibody as the capture antibody. Anti-Bag1 rabbit serum was used as the detection antibody, followed by an alkaline phosphatase conjugated anti-Rabbit IgG as the Secondary antibody.

## Specification

<b>Product Description</b>	Human recombinant monoclonal antibody raised against recombinant HA-Tag.
<b>Antibody Species</b>	Rabbit
<b>Immunogen</b>	Original antibody is raised against a synthetic peptide corresponding to HA-tag (amino acids 98-106 of Human influenza hemagglutinin).
<b>Specificity</b>	This antibody reacts to recombinant proteins containing a HA-Tag fused to either the amino or carboxy terminus. No cross reactivity with any endogenous protein.
<b>Form</b>	Liquid

<b>Purification</b>	Protein A purification
<b>Isotype</b>	IgG
<b>Recommend Usage</b>	ELISA (capturer: 0.5 ug/mL-2 ug/mL) Detection Antibody (0.01 ug/mL-0.5 ug/mL) Western Blot (0.1 ug/mL-1 ug/mL) The optimal working dilution should be determined by the end user.
<b>Storage Buffer</b>	In PBS (50% glycerol, 1% BSA, 0.09% sodium azide)
<b>Storage Instruction</b>	Store at -20°C. Aliquot to avoid repeated freezing and thawing.
<b>Note</b>	This product contains sodium azide: a POISONOUS AND HAZARDOUS SUBSTANCE which should be handled by trained staff only.

## Applications

- Western Blot (Transfected lysate)

Western Blot (Transfected lysate) analysis of 293T cells (1) transfected with a DNA construct encoding HA-Tag KRas fusion protein, (2) untransfected a DNA construct encoding HA-Tag KRas fusion protein.

- Enzyme-linked Immunoabsorbent Assay

ELISA performed on whole lysate of LNCaP cells overexpressing HA-tag Bag1 protein.

ELISA analysis of chimeric human anti-HA-Tag antibody as the capture antibody. Anti-Bag1 rabbit serum was used as the detection antibody, followed by an alkaline phosphatase conjugated anti-Rabbit IgG as the Secondary antibody.