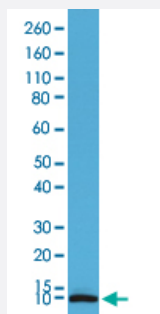


RecomAb™

# S100B monoclonal antibody, clone RM304

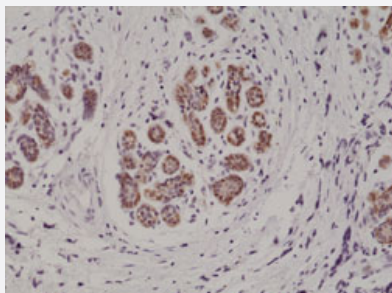
Catalog # MAB16930      Size 100 uL

## Applications



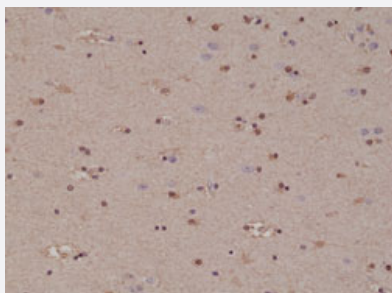
### Western Blot (Tissue lysate)

Western Blot (Tissue lysate) analysis of human brain.



### Immunohistochemistry (Formalin/PFA-fixed paraffin-embedded sections)

Immunohistochemical staining of human breast cancer.



### Immunohistochemistry (Formalin/PFA-fixed paraffin-embedded sections)

Immunohistochemical staining of human brain.

## Specification

### Product Description

Rabbit recombinant monoclonal antibody raised against human S100B.

Antibody Species	Rabbit
Immunogen	Original antibody is raised against a synthetic peptide corresponding to C-terminus of human S100B .
Reactivity	Human
Specificity	This antibody reacts to human S100-B (S-100 protein beta chain). It may also react to mouse or rat S100-B, as predicted by immunogen homology.
Form	Liquid
Purification	Protein A purification
Isotype	IgG
Recommend Usage	Immunohistochemistry (Formalin/PFA-fixed paraffin-embedded sections) (1:500-1000) Western Blot (1:100-200) The optimal working dilution should be determined by the end user.
Storage Buffer	In PBS (50% glycerol, 1% BSA, 0.09% sodium azide)
Storage Instruction	Store at -20°C. Aliquot to avoid repeated freezing and thawing.
Note	This product contains sodium azide: a POISONOUS AND HAZARDOUS SUBSTANCE which should be handled by trained staff only.

## Applications

- Western Blot (Tissue lysate)

Western Blot (Tissue lysate) analysis of human brain.

- Immunohistochemistry (Formalin/PFA-fixed paraffin-embedded sections)

Immunohistochemical staining of human breast cancer.

- Immunohistochemistry (Formalin/PFA-fixed paraffin-embedded sections)

Immunohistochemical staining of human brain.

## Gene Info — S100B

Entrez GeneID [6285](#)

Gene Name S100B

Gene Alias	NEF, S100, S100beta
Gene Description	S100 calcium binding protein B
Omim ID	<a href="#">176990</a>
Gene Ontology	<a href="#">Hyperlink</a>
Gene Summary	<p>The protein encoded by this gene is a member of the S100 family of proteins containing 2 EF-hand calcium-binding motifs. S100 proteins are localized in the cytoplasm and/or nucleus of a wide range of cells, and involved in the regulation of a number of cellular processes such as cell cycle progression and differentiation. S100 genes include at least 13 members which are located as a cluster on chromosome 1q21; however, this gene is located at 21q22.3. This protein may function in Neurite extension, proliferation of melanoma cells, stimulation of Ca<sup>2+</sup> fluxes, inhibition of PKC-mediated phosphorylation, astrocytosis and axonal proliferation, and inhibition of microtubule assembly. Chromosomal rearrangements and altered expression of this gene have been implicated in several neurological, neoplastic, and other types of diseases, including Alzheimer's disease, Down's syndrome, epilepsy, amyotrophic lateral sclerosis, melanoma, and type I diabetes. [provided by RefSeq]</p>
Other Designations	OTTHUMP00000174958 S-100 calcium-binding protein, beta chain S100 beta S100 calcium binding protein, beta (neural) S100 calcium-binding protein, beta S100 calcium-binding protein, beta (neural)

## Disease

- [Alzheimer disease](#)
- [Bipolar Disorder](#)
- [Cognition Disorders](#)
- [Dementia](#)
- [Depressive Disorder](#)
- [Diseases in Twins](#)
- [Genetic Predisposition to Disease](#)
- [Mental Disorders](#)
- [Neuropsychological Tests](#)
- [Psychotic Disorders](#)
- [Schizophrenia](#)