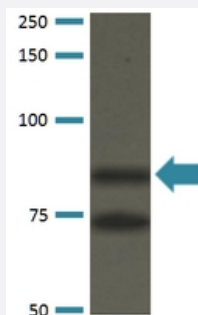


Atxn1 monoclonal antibody, clone S76-8 (FITC)

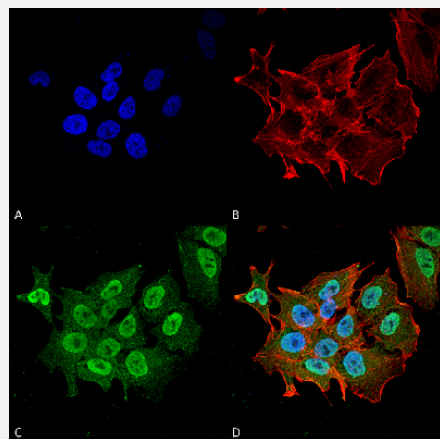
Catalog # MAB16869 Size 100 ug

Applications



Western Blot (Transfected lysate)

Western Blot analysis of COS-1 cells transfected with Atxn1 protein using Atxn1 monoclonal antibody, clone S76-8 (FITC) (Cat # MAB16869).



Immunocytochemistry

Immunocytochemical staining of SK-N-BE with Atxn1 monoclonal antibody, clone S76-8 (FITC) (Cat # MAB16869). (A) DAPI (blue) nuclear stain (B) Phalloidin Texas Red F-Actin stain (C) Atxn1 Antibody and (D) Composite.

Specification

Product Description	Mouse monoclonal antibody raised against synthetic peptide of mouse Atxn1.
Immunogen	A synthetic peptide corresponding to amino acids 164-197 of mouse Atxn1.
Sequence	ATTPSQRSQLEAYSTLLANMGSLSQAPGHKVEPP
Host	Mouse
Reactivity	Human, Mouse

Form	Liquid
Conjugation	FITC
Purification	Protein G purification
Isotype	IgG2b
Recommend Usage	Immunocytochemistry (1:100) Immunofluorescence (1:100) Immunohistochemistry (Formalin/PFA-fixed paraffin-embedded sections) Immunoprecipitation Western Blot (1:1000) The optimal working dilution should be determined by the end user.
Storage Buffer	In PBS, pH 7.4 (50% glycerol, 0.09% sodium azide).
Storage Instruction	Store at -20°C.
Note	This product contains sodium azide: a POISONOUS AND HAZARDOUS SUBSTANCE which should be handled by trained staff only.

Applications

- Western Blot (Transfected lysate)

Western Blot analysis of COS-1 cells transfected with Atxn1 protein using Atxn1 monoclonal antibody, clone S76-8 (FITC) (Cat # MAB16869).

- Immunohistochemistry (Formalin/PFA-fixed paraffin-embedded sections)

- Immunocytochemistry

Immunocytochemical staining of SK-N-BE with Atxn1 monoclonal antibody, clone S76-8 (FITC) (Cat # MAB16869). (A) DAPI (blue) nuclear stain (B) Phalloidin Texas Red F-Actin stain (C) Atxn1 Antibody and (D) Composite.

- Immunofluorescence

- Immunoprecipitation

Gene Info — Atxn1

Entrez GeneID [20238](#)

Protein Accession# [P54254](#)

Gene Name	Atxn1
Gene Alias	Ataxin-1, Atx1, C85907, Sca1
Gene Description	ataxin 1
Gene Ontology	Hyperlink
Other Designations	spinocerebellar ataxia 1 homolog