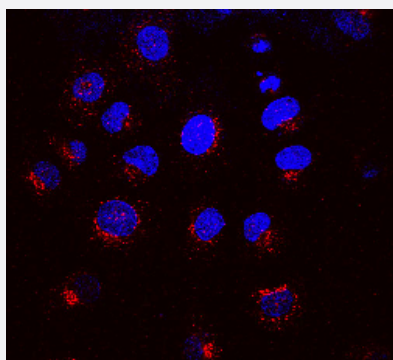


KDEL1 monoclonal antibody, clone KR-10 (FITC)

Catalog # MAB16761 Size 100 ug

Applications



Immunocytochemistry

Immunocytochemical staining of NRK cells with KDEL1 monoclonal antibody, clone KR-10 (FITC) (Cat # MAB16761) (Red).

Specification

Product Description	Mouse monoclonal antibody raised against synthetic peptide of bovine KDEL1.
Immunogen	A synthetic peptide (conjugated with KLH) corresponding to amino acids 192-212 of bovine KDEL1.
Host	Mouse
Reactivity	Bovine
Form	Liquid
Conjugation	FITC
Purification	Protein G purification
Isotype	IgG1

Recommend Usage	Immunocytochemistry (1:1000) Immunofluorescence (1:1000) Immunohistochemistry (Formalin/PFA-fixed paraffin-embedded sections) Immunoprecipitation Western Blot (1:1000) The optimal working dilution should be determined by the end user.
Storage Buffer	In PBS, pH 7.2 (50% glycerol, 0.09% sodium azide).
Storage Instruction	Store at -20°C.
Note	This product contains sodium azide: a POISONOUS AND HAZARDOUS SUBSTANCE which should be handled by trained staff only.

Applications

- Western Blot
- Immunohistochemistry (Formalin/PFA-fixed paraffin-embedded sections)
- Immunocytochemistry
Immunocytochemical staining of NRK cells with KDELR1 monoclonal antibody, clone KR-10 (FITC) (Cat # MAB16761) (Red).
- Immunofluorescence
- Immunoprecipitation

Gene Info — KDELR1

Entrez GeneID	618184
Protein Accession#	P33946
Gene Name	KDELR1
Gene Alias	MGC139648
Gene Description	KDEL (Lys-Asp-Glu-Leu) endoplasmic reticulum protein retention receptor 1
Gene Ontology	Hyperlink
Other Designations	KDEL endoplasmic reticulum protein retention receptor 1

Publication Reference

- [Defective secretion of recombinant fragments of fibrillin-1: implications of protein misfolding for the pathogenesis of Marfan syndrome and related disorders.](#)

Pat Whiteman, Penny A Handford.

Human Molecular Genetics 2003 Apr; 12(7):727.