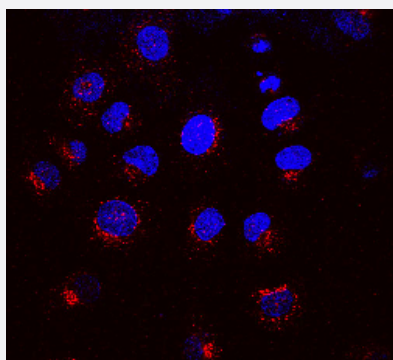


KDELRL1 monoclonal antibody, clone KR-10 (Biotin)

Catalog # MAB16760 Size 100 ug

Applications



Immunocytochemistry

Immunocytochemical staining of NRK cells with KDELRL1 monoclonal antibody, clone KR-10 (Biotin) (Cat # MAB16760) (Red).

Specification

Product Description	Mouse monoclonal antibody raised against synthetic peptide of bovine KDELRL1.
Immunogen	A synthetic peptide (conjugated with KLH) corresponding to amino acids 192-212 of bovine KDELRL1.
Host	Mouse
Reactivity	Bovine
Form	Liquid
Conjugation	Biotin
Purification	Protein G purification
Isotype	IgG1

Recommend Usage

Immunocytochemistry (1:1000)
Immunofluorescence (1:1000)
Immunohistochemistry (Formalin/PFA-fixed paraffin-embedded sections)
Immunoprecipitation
Western Blot (1:1000)
The optimal working dilution should be determined by the end user.

Storage Buffer

In PBS, pH 7.2 (50% glycerol, 0.09% sodium azide).

Storage Instruction

Store at -20°C.

Note

This product contains sodium azide: a POISONOUS AND HAZARDOUS SUBSTANCE which should be handled by trained staff only.

Applications

- Western Blot
- Immunohistochemistry (Formalin/PFA-fixed paraffin-embedded sections)
- Immunocytochemistry
Immunocytochemical staining of NRK cells with KDELR1 monoclonal antibody, clone KR-10 (Biotin) (Cat # MAB16760) (Red).
- Immunofluorescence
- Immunoprecipitation

Gene Info — KDELR1

Entrez GeneID

[618184](#)

Protein Accession#

[P33946](#)

Gene Name

KDELR1

Gene Alias

MGC139648

Gene Description

KDEL (Lys-Asp-Glu-Leu) endoplasmic reticulum protein retention receptor 1

Gene Ontology

[Hyperlink](#)

Other Designations

KDEL endoplasmic reticulum protein retention receptor 1

Publication Reference

- [Defective secretion of recombinant fragments of fibrillin-1: implications of protein misfolding for the pathogenesis of Marfan syndrome and related disorders.](#)

Pat Whiteman, Penny A Handford.

Human Molecular Genetics 2003 Apr; 12(7):727.