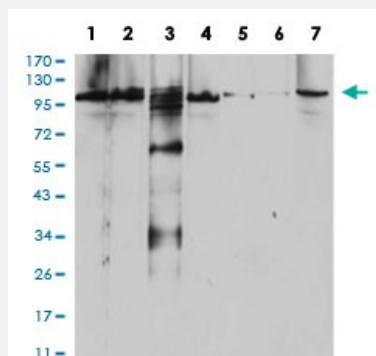


RAB11FIP1 monoclonal antibody, clone 1A12B9D8

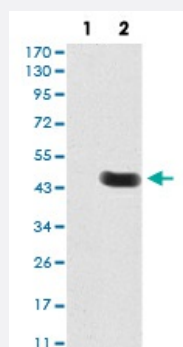
Catalog # MAB16735 Size 100 ug

Applications



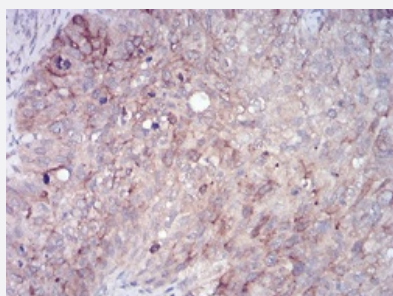
Western Blot (Cell lysate)

Western blot analysis of Lane 1: Raji cell; Lane 2: SW620 cell; Lane 3: A431 cell; Lane 4: SW480 cell; Lane 5: HepG2 cell; Lane 6: Hela cell and Lane 7: NIH/3T3 cell with RAB11FIP1 monoclonal antibody.



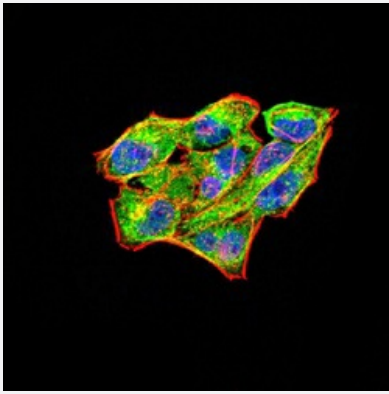
Western Blot (Transfected lysate)

Western blot analysis of Lane 1: HEK293 cell; Lane 2: RAB11FIP1-hlgGfc transfected HEK293 cell with RAB11FIP1 monoclonal antibody.



Immunohistochemistry (Formalin/PFA-fixed paraffin-embedded sections)

Immunohistochemical staining of paraffin-embedded cervical cancer tissues with RAB11FIP1 monoclonal antibody.



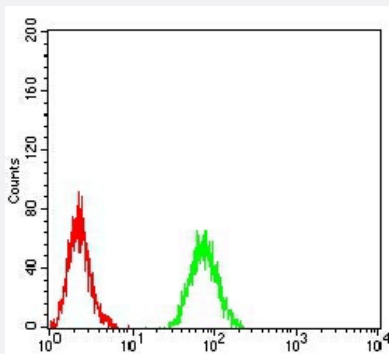
Immunocytochemistry

Immunocytochemical staining of HeLa cells with RAB11FIP1 monoclonal antibody (green). DRAQ5 fluorescent DNA dye (blue). Actin filaments labeled with Alexa Fluor-555 phalloidin (red).



Enzyme-linked Immunoabsorbent Assay

ELISA analysis of RAB11FIP1 monoclonal antibody, clone 1A12B9D8.



Flow Cytometry

Flow cytometric analysis of Raji cells with RAB11FIP1 monoclonal antibody (green) and negative control (red).

Specification

Product Description	Mouse monoclonal antibody raised against recombinant human RAB11FIP1.
Immunogen	Recombinant protein corresponding to amino acid 130-271 of human RAB11FIP1 from <i>E. coli</i> .
Host	Mouse
Theoretical MW (kDa)	137.2
Reactivity	Human, Mouse
Form	Liquid
Isotype	IgG1

Recommend Usage	ELISA (1:10000) Western Blot (1:500-1:2000) Immunohistochemistry (1:200-1:1000) Immunocytochemistry (1:200-1:1000) Flow Cytometry (1:200-1:400) The optimal working dilution should be determined by the end user.
Storage Buffer	In PBS (0.05% sodium azide).
Storage Instruction	Store at 4°C. For long term storage store at -20°C. Aliquot to avoid repeated freezing and thawing.
Note	This product contains sodium azide: a POISONOUS AND HAZARDOUS SUBSTANCE which should be handled by trained staff only.

Applications

- Western Blot (Cell lysate)

Western blot analysis of Lane 1: Raji cell; Lane 2: SW620 cell; Lane 3: A431 cell; Lane 4: SW480 cell; Lane 5: HepG2 cell; Lane 6: Hela cell and Lane 7: NIH/3T3 cell with RAB11FIP1 monoclonal antibody.

- Western Blot (Transfected lysate)

Western blot analysis of Lane 1: HEK293 cell; Lane 2: RAB11FIP1-hlgGfc transfected HEK293 cell with RAB11FIP1 monoclonal antibody.

- Immunohistochemistry (Formalin/PFA-fixed paraffin-embedded sections)

Immunohistochemical staining of paraffin-embedded cervical cancer tissues with RAB11FIP1 monoclonal antibody.

- Immunocytochemistry

Immunocytochemical staining of Hela cells with RAB11FIP1 monoclonal antibody (green). DRAQ5 fluorescent DNA dye (blue). Actin filaments labeled with Alexa Fluor-555 phalloidin (red).

- Enzyme-linked Immunoabsorbent Assay

ELISA analysis of RAB11FIP1 monoclonal antibody, clone 1A12B9D8.

- Flow Cytometry

Flow cytometric analysis of Raji cells with RAB11FIP1 monoclonal antibody (green) and negative control (red).

Gene Info — RAB11FIP1

Entrez GeneID

[80223](#)

Gene Name	RAB11FIP1
Gene Alias	DKFZp686E2214, FLJ22524, FLJ22622, MGC78448, NOEL1A, RCP, rab11-FIP1
Gene Description	RAB11 family interacting protein 1 (class I)
Omim ID	608737
Gene Ontology	Hyperlink
Gene Summary	Proteins of the large Rab GTPase family (see RAB1A; MIM 179508) have regulatory roles in the formation, targeting, and fusion of intracellular transport vesicles. RAB11FIP1 is one of many proteins that interact with and regulate Rab GTPases (Hales et al., 2001 [PubMed 11495908]).[supplied by OMIM]
Other Designations	RAB11 coupling protein RAB11 family interacting protein 1 Rab effector protein Rab-interacting recycling protein

Pathway

- [Endocytosis](#)