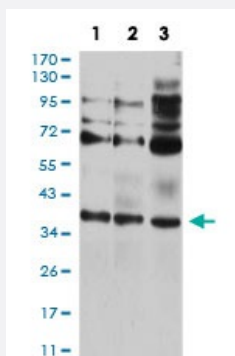


CIDEC monoclonal antibody, clone 7C12F11

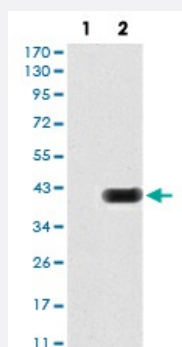
Catalog # MAB16728 Size 100 ug

Applications



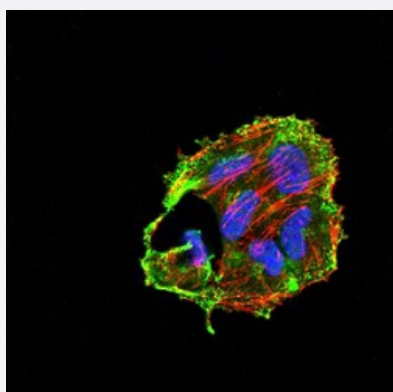
Western Blot (Cell lysate)

Western blot analysis of Lane 1: HEK293 cell; Lane 2: A431 cell and Lane 3: HCT116 cell with CIDEC monoclonal antibody.



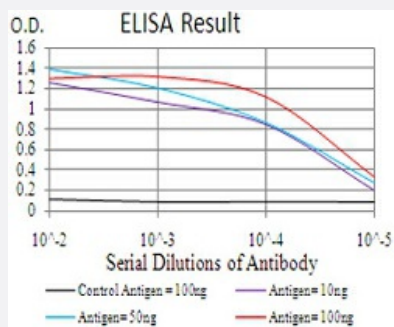
Western Blot (Transfected lysate)

Western blot analysis of Lane 1: HEK293 cell; Lane 2: CIDEC-hlgGfC transfected HEK293 cell with CIDEC monoclonal antibody.



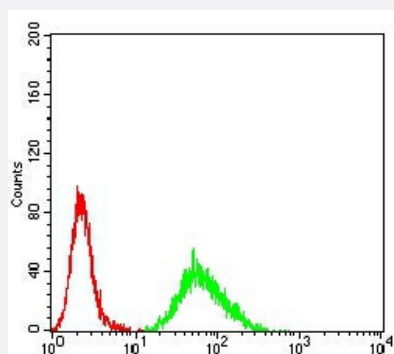
Immunocytochemistry

Immunocytochemical staining of HeLa cells with CIDEC monoclonal antibody (green). DRAQ5 fluorescent DNA dye (blue). Actin filaments labeled with Alexa Fluor-555 phalloidin (red).



Enzyme-linked Immunoabsorbent Assay

ELISA analysis of CIDEc monoclonal antibody, clone 7C12F11.



Flow Cytometry

Flow cytometric analysis of Hela cells with CIDEc monoclonal antibody (green) and negative control (red).

Specification

Product Description	Mouse monoclonal antibody raised against recombinant human CIDEc.
Immunogen	Recombinant protein corresponding to amino acid 53-141 of human CIDEc from <i>E. coli</i> .
Host	Mouse
Theoretical MW (kDa)	26.8
Reactivity	Human
Form	Liquid
Isotype	IgG1
Recommend Usage	ELISA (1:10000) Western Blot (1:500-1:2000) Immunohistochemistry Immunocytochemistry (1:200-1:1000) Flow Cytometry (1:200-1:400) The optimal working dilution should be determined by the end user.
Storage Buffer	In PBS (0.05% sodium azide).
Storage Instruction	Store at 4°C. For long term storage store at -20°C. Aliquot to avoid repeated freezing and thawing.

Note

This product contains sodium azide: a POISONOUS AND HAZARDOUS SUBSTANCE which should be handled by trained staff only.

Applications

- Western Blot (Cell lysate)

Western blot analysis of Lane 1: HEK293 cell; Lane 2: A431 cell and Lane 3: HCT116 cell with CIDEc monoclonal antibody.

- Western Blot (Transfected lysate)

Western blot analysis of Lane 1: HEK293 cell; Lane 2: CIDEc-hlgGFc transfected HEK293 cell with CIDEc monoclonal antibody.

- Immunocytochemistry

Immunocytochemical staining of Hela cells with CIDEc monoclonal antibody (green). DRAQ5 fluorescent DNA dye (blue). Actin filaments labeled with Alexa Fluor-555 phalloidin (red).

- Enzyme-linked Immunoabsorbent Assay

ELISA analysis of CIDEc monoclonal antibody, clone 7C12F11.

- Flow Cytometry

Flow cytometric analysis of Hela cells with CIDEc monoclonal antibody (green) and negative control (red).

Gene Info — CIDEc

Entrez GeneID [63924](#)

Gene Name CIDEc

Gene Alias CIDE-3, FLJ20871, Fsp27

Gene Description cell death-inducing DFFA-like effector c

Gene Ontology [Hyperlink](#)

Gene Summary DNA fragmentation factor (DFF) induces the fragmentation of DNA associated with apoptosis. A novel family of cell death-inducing DFF45 (MIM 601882)-like effectors (CIDEs), including CIDEc, can also promote apoptosis (Liang et al., 2003 [PubMed 12429024]).[supplied by OMIM]

Other Designations cell death activator CIDE-3|fat specific protein 27