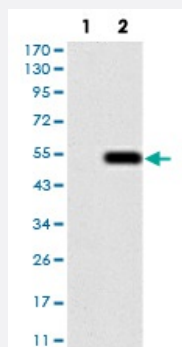


# AIM2 monoclonal antibody, clone 3C4G11

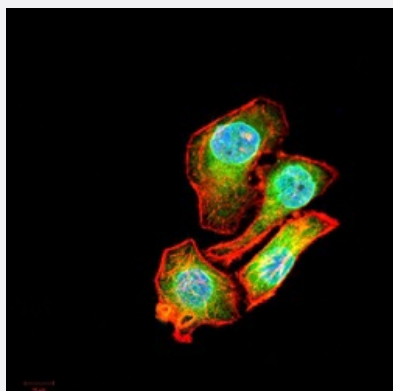
Catalog # MAB16708      Size 10 x 100 ug, 100 ug

## Applications



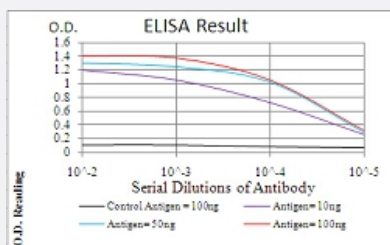
### Western Blot (Transfected lysate)

Western blot analysis of Lane 1: HEK293 cell; Lane 2: AIM2-hlgGFc transfected HEK293 cell with AIM2 monoclonal antibody.



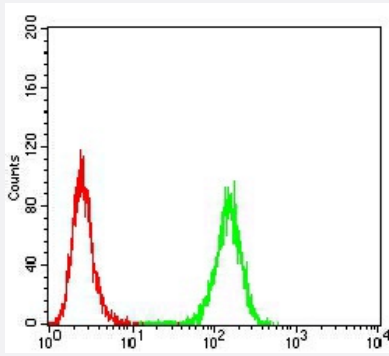
### Immunocytochemistry

Immunocytochemical staining of MCF-7 cells with AIM2 monoclonal antibody (green). DRAQ5 fluorescent DNA dye (blue). Actin filaments labeled with Alexa Fluor-555 phalloidin (red).



### Enzyme-linked Immunoabsorbent Assay

ELISA analysis of AIM2 monoclonal antibody, clone 3C4G11.



## Flow Cytometry

Flow cytometric analysis of Hela cells with AIM2 monoclonal antibody (green) and negative control (red).

## Specification

<b>Product Description</b>	Mouse monoclonal antibody raised against recombinant human AIM2.
<b>Immunogen</b>	Recombinant protein corresponding to amino acid 1-195 of human AIM2 from <i>E. coli</i> .
<b>Host</b>	Mouse
<b>Theoretical MW (kDa)</b>	39
<b>Reactivity</b>	Human
<b>Form</b>	Liquid
<b>Isotype</b>	IgG1
<b>Recommend Usage</b>	ELISA (1:10000) Western Blot (1:500-1:2000) Immunohistochemistry Immunocytochemistry (1:200-1:1000) Flow Cytometry (1:200-1:400) The optimal working dilution should be determined by the end user.
<b>Storage Buffer</b>	In PBS (0.05% sodium azide).
<b>Storage Instruction</b>	Store at 4°C. For long term storage store at -20°C. Aliquot to avoid repeated freezing and thawing.
<b>Note</b>	This product contains sodium azide: a POISONOUS AND HAZARDOUS SUBSTANCE which should be handled by trained staff only.

## Applications

- Western Blot (Transfected lysate)

Western blot analysis of Lane 1: HEK293 cell; Lane 2: AIM2-hlgGfc transfected HEK293 cell with AIM2 monoclonal antibody.

- Immunocytochemistry

Immunocytochemical staining of MCF-7 cells with AIM2 monoclonal antibody (green). DRAQ5 fluorescent DNA dye (blue). Actin filaments labeled with Alexa Fluor-555 phalloidin (red).

- Enzyme-linked Immunoabsorbent Assay

ELISA analysis of AIM2 monoclonal antibody, clone 3C4G11.

- Flow Cytometry

Flow cytometric analysis of Hela cells with AIM2 monoclonal antibody (green) and negative control (red).

## Gene Info — AIM2

Entrez GeneID	<a href="#">9447</a>
Gene Name	AIM2
Gene Alias	PYHIN4
Gene Description	absent in melanoma 2
Omim ID	<a href="#">604578</a>
Gene Ontology	<a href="#">Hyperlink</a>
Gene Summary	AIM2 is a member of the IFI20X /IFI16 family. It plays a putative role in tumorigenic reversion and may control cell proliferation. Interferon-gamma induces expression of AIM2. [provided by RefSeq]
Other Designations	OTTHUMP00000035296

## Disease

- [Genetic Predisposition to Disease](#)
- [Lupus Erythematosus](#)