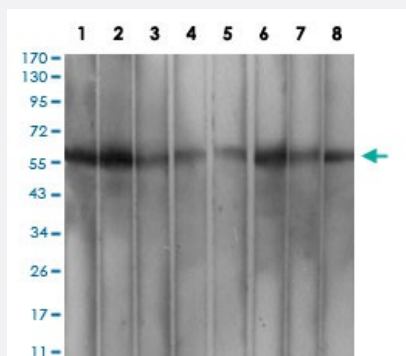


WTAP monoclonal antibody, clone 6B6B6

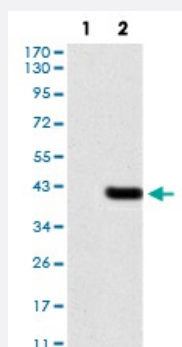
Catalog # MAB16701 Size 100 ug

Applications



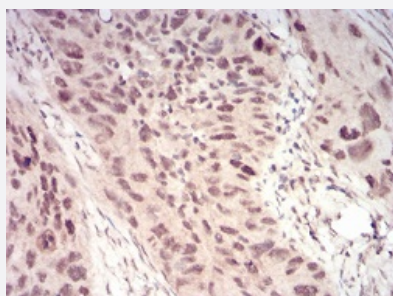
Western Blot (Cell lysate)

Western blot analysis of Lane 1: MCF-7 cell; Lane 2: Hela cell; Lane 3: K562 cell; Lane 4: Hek293 cell; Lane 5: A549 cell; Lane 6: HepG2 cell; Lane 7: Jurkat cell and Lane 8: Cos7 cell with WTAP monoclonal antibody.



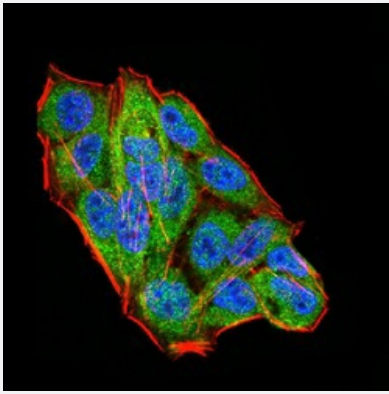
Western Blot (Transfected lysate)

Western blot analysis of Lane 1: HEK293 cell; Lane 2: WTAP-hlgGfc transfected HEK293 cell with WTAP monoclonal antibody.



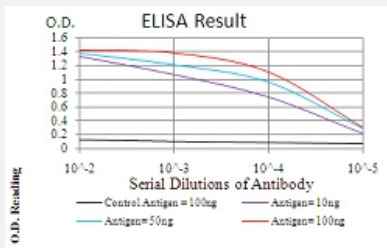
Immunohistochemistry (Formalin/PFA-fixed paraffin-embedded sections)

Immunohistochemical staining of paraffin-embedded cervical cancer tissues with WTAP monoclonal antibody.



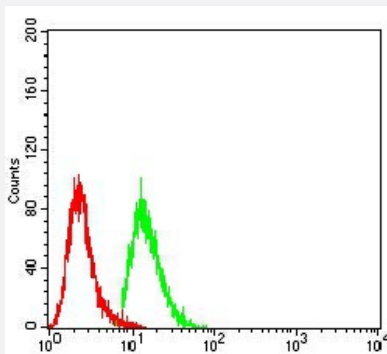
Immunocytochemistry

Immunocytochemical staining of Hela cells with WTAP monoclonal antibody (green). DRAQ5 fluorescent DNA dye (blue). Actin filaments labeled with Alexa Fluor-555 phalloidin (red).



Enzyme-linked Immunoabsorbent Assay

ELISA analysis of WTAP monoclonal antibody, clone 6B6B6.



Flow Cytometry

Flow cytometric analysis of A549 cells with WTAP monoclonal antibody (green) and negative control (red).

Specification

Product Description	Mouse monoclonal antibody raised against recombinant human WTAP.
Immunogen	Recombinant protein corresponding to amino acid 91-201 of human WTAP from <i>E. coli</i> .
Host	Mouse
Theoretical MW (kDa)	44.2
Reactivity	Human, Monkey
Form	Liquid
Isotype	IgG1

Recommend Usage	ELISA (1:10000) Western Blot (1:500-1:2000) Immunohistochemistry (1:200-1:1000) Immunocytochemistry (1:200-1:1000) Flow Cytometry (1:200-1:400) The optimal working dilution should be determined by the end user.
Storage Buffer	In PBS (0.05% sodium azide).
Storage Instruction	Store at 4°C. For long term storage store at -20°C. Aliquot to avoid repeated freezing and thawing.
Note	This product contains sodium azide: a POISONOUS AND HAZARDOUS SUBSTANCE which should be handled by trained staff only.

Applications

- Western Blot (Cell lysate)

Western blot analysis of Lane 1: MCF-7 cell; Lane 2: Hela cell; Lane 3: K562 cell; Lane 4: Hek293 cell; Lane 5: A549 cell; Lane 6: HepG2 cell; Lane 7: Jurkat cell and Lane 8: Cos7 cell with WTAP monoclonal antibody.

- Western Blot (Transfected lysate)

Western blot analysis of Lane 1: HEK293 cell; Lane 2: WTAP-hlgGfc transfected HEK293 cell with WTAP monoclonal antibody.

- Immunohistochemistry (Formalin/PFA-fixed paraffin-embedded sections)

Immunohistochemical staining of paraffin-embedded cervical cancer tissues with WTAP monoclonal antibody.

- Immunocytochemistry

Immunocytochemical staining of Hela cells with WTAP monoclonal antibody (green). DRAQ5 fluorescent DNA dye (blue). Actin filaments labeled with Alexa Fluor-555 phalloidin (red).

- Enzyme-linked Immunoabsorbent Assay

ELISA analysis of WTAP monoclonal antibody, clone 6B6B6.

- Flow Cytometry

Flow cytometric analysis of A549 cells with WTAP monoclonal antibody (green) and negative control (red).

Gene Info — WTAP

Entrez GeneID

[9589](#)

Gene Name

WTAP

Gene Alias	DKFZp686F20131, KIAA0105, MGC3925
Gene Description	Wilms tumor 1 associated protein
Omim ID	605442
Gene Ontology	Hyperlink
Gene Summary	<p>The Wilms tumor suppressor gene WT1 appears to play a role in both transcriptional and posttranscriptional regulation of certain cellular genes. This gene encodes a WT1-associating protein, which is a ubiquitously expressed nuclear protein. Like WT1 protein, this protein is localized throughout the nucleoplasm as well as in speckles and partially colocalizes with splicing factors. Alternative splicing of this gene results in three transcript variants, two of which encode the same isoform. [provided by RefSeq]</p>
Other Designations	OTTHUMP00000017522 OTTHUMP00000017523 PNAS-132 WT1-associated protein Wilms' tumour 1-associating protein putative pre-mRNA splicing regulator female-lethal(2D)