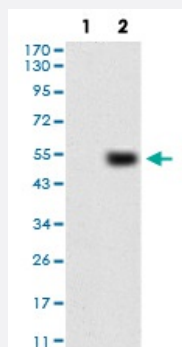


HSPB2 monoclonal antibody, clone 4B9E2

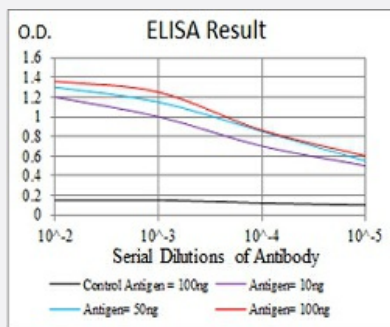
Catalog # MAB16696 Size 100 ug

Applications



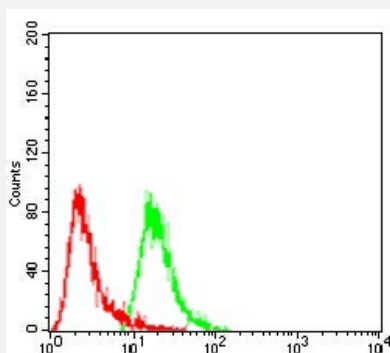
Western Blot (Transfected lysate)

Western blot analysis of Lane 1: HEK293 cell; Lane 2: HSPB2-hlgGfC transfected HEK293 cell with HSPB2 monoclonal antibody.



Enzyme-linked Immunoabsorbent Assay

ELISA analysis of HSPB2 monoclonal antibody, clone 4B9E2.



Flow Cytometry

Flow cytometric analysis of A549 cells with HSPB2 monoclonal antibody (green) and negative control (red).

Specification

Product Description

Mouse monoclonal antibody raised against recombinant human HSPB2.

Immunogen	Recombinant protein corresponding to amino acid 1-182 of human HSPB2 from <i>E. coli</i> .
Host	Mouse
Theoretical MW (kDa)	20.2
Reactivity	Human
Form	Liquid
Isotype	IgG1
Recommend Usage	ELISA (1:10000) Western Blot (1:500-1:2000) Immunohistochemistry Immunocytochemistry Flow Cytometry (1:200-1:400) The optimal working dilution should be determined by the end user.
Storage Buffer	In PBS (0.05% sodium azide).
Storage Instruction	Store at 4°C. For long term storage store at -20°C. Aliquot to avoid repeated freezing and thawing.
Note	This product contains sodium azide: a POISONOUS AND HAZARDOUS SUBSTANCE which should be handled by trained staff only.

Applications

- Western Blot (Transfected lysate)

Western blot analysis of Lane 1: HEK293 cell; Lane 2: HSPB2-hlgGfc transfected HEK293 cell with HSPB2 monoclonal antibody.

- Enzyme-linked Immunoabsorbent Assay

ELISA analysis of HSPB2 monoclonal antibody, clone 4B9E2.

- Flow Cytometry

Flow cytometric analysis of A549 cells with HSPB2 monoclonal antibody (green) and negative control (red).

Gene Info — HSPB2

Entrez GeneID

[3316](#)

Gene Name

HSPB2

Gene Alias	HSP27, Hs.78846, LOH11CR1K, MGC133245, MKBP
Gene Description	heat shock 27kDa protein 2
Omim ID	602179
Gene Ontology	Hyperlink
Other Designations	heat shock 27kD protein 2 heat-shock protein beta-2

Disease

- [Alzheimer disease](#)