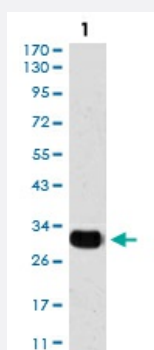


SNAI2 monoclonal antibody, clone 4B6D5

Catalog # MAB16648

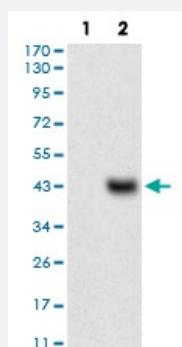
Size 100 ug

Applications



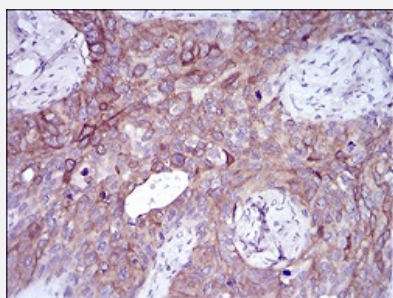
Western Blot (Cell lysate)

Western blot analysis using SNAI2 monoclonal antibody against MCF-7 cell lysate.



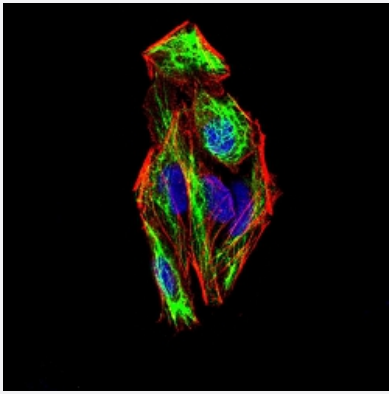
Western Blot (Transfected lysate)

Western blot analysis of Lane 1: HEK293 cell; Lane 2: SNAI2-hlgFc transfected HEK293 cell with SNAI2 monoclonal antibody.



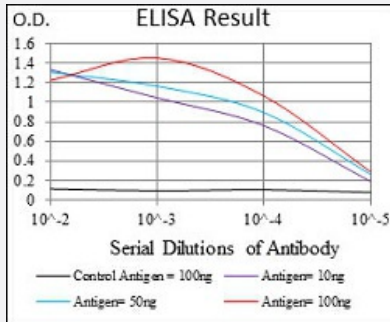
Immunohistochemistry (Formalin/PFA-fixed paraffin-embedded sections)

Immunohistochemical staining of paraffin-embedded cervical cancer tissues with SNAI2 monoclonal antibody.



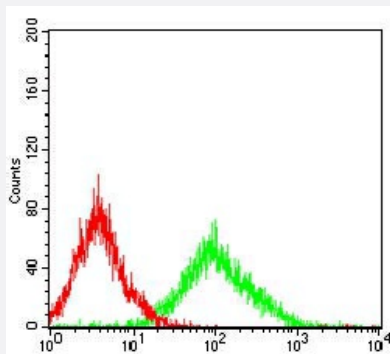
Immunocytochemistry

Immunocytochemical staining of Hela cells with SNAI2 monoclonal antibody (green). DRAQ5 fluorescent DNA dye (blue). Actin filaments labeled with Alexa Fluor-555 phalloidin (red).



Enzyme-linked Immunoabsorbent Assay

ELISA analysis of SNAI2 monoclonal antibody, clone 4B6D5.



Flow Cytometry

Flow cytometric analysis of MCF-7 cells with SNAI2 monoclonal antibody (green) and negative control (red).

Specification

Product Description	Mouse monoclonal antibody raised against recombinant human SNAI2.
Immunogen	Recombinant protein corresponding to amino acid 100-200 of human SNAI2 from <i>E. coli</i> .
Host	Mouse
Theoretical MW (kDa)	30
Reactivity	Human
Form	Liquid
Isotype	IgG1

Recommend Usage	ELISA (1:10000) Western Blot (1:500-1:2000) Immunohistochemistry (1:200-1:1000) Immunocytochemistry (1:200-1:1000) Flow Cytometry (1:200-1:400) The optimal working dilution should be determined by the end user.
Storage Buffer	In PBS (0.05% sodium azide).
Storage Instruction	Store at 4°C. For long term storage store at -20°C. Aliquot to avoid repeated freezing and thawing.
Note	This product contains sodium azide: a POISONOUS AND HAZARDOUS SUBSTANCE which should be handled by trained staff only.

Applications

- Western Blot (Cell lysate)

Western blot analysis using SNAI2 monoclonal antibody against MCF-7 cell lysate.

- Western Blot (Transfected lysate)

Western blot analysis of Lane 1: HEK293 cell; Lane 2: SNAI2-hlgGfc transfected HEK293 cell with SNAI2 monoclonal antibody.

- Immunohistochemistry (Formalin/PFA-fixed paraffin-embedded sections)

Immunohistochemical staining of paraffin-embedded cervical cancer tissues with SNAI2 monoclonal antibody.

- Immunocytochemistry

Immunocytochemical staining of Hela cells with SNAI2 monoclonal antibody (green). DRAQ5 fluorescent DNA dye (blue). Actin filaments labeled with Alexa Fluor-555 phalloidin (red).

- Enzyme-linked Immunoabsorbent Assay

ELISA analysis of SNAI2 monoclonal antibody, clone 4B6D5.

- Flow Cytometry

Flow cytometric analysis of MCF-7 cells with SNAI2 monoclonal antibody (green) and negative control (red).

Gene Info — SNAI2

Entrez GeneID

[6591](#)

Gene Name

SNAI2

Gene Alias	MGC10182, SLUG, SLUGH1, WS2D
Gene Description	snail homolog 2 (Drosophila)
Omim ID	172800 602150 608890
Gene Ontology	Hyperlink
Gene Summary	This gene encodes a member of the Snail family of C2H2-type zinc finger transcription factors. The encoded protein acts as a transcriptional repressor that binds to E-box motifs and is also likely to repress E-cadherin transcription in breast carcinoma. This protein is involved in epithelial-mesenchymal transitions and has antiapoptotic activity. Mutations in this gene may be associated with sporadic cases of neural tube defects. [provided by RefSeq]
Other Designations	OTTHUMP00000195093 neural crest transcription factor SLUG slug (chicken homolog), zinc finger protein slug homolog, zinc finger protein snail 2

Pathway

- [Adherens junction](#)

Disease

- [Cleft Lip](#)
- [Cleft Palate](#)