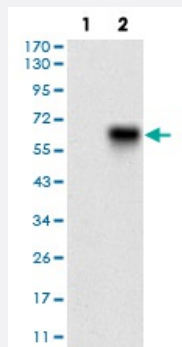


CAMK2G monoclonal antibody, clone 6A4A10

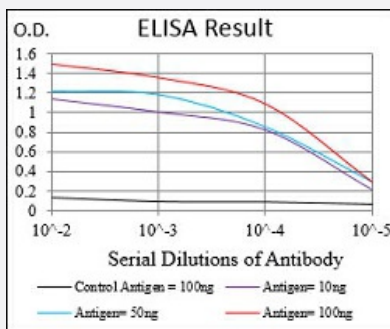
Catalog # MAB16592 Size 100 ug

Applications



Western Blot (Transfected lysate)

Western blot analysis of Lane 1: HEK293 cell; Lane 2: CAMK2G-hlgGfC transfected HEK293 cell with CAMK2G monoclonal antibody.



Enzyme-linked Immunoabsorbent Assay

ELISA analysis of CAMK2G monoclonal antibody, clone 6A4A10.

Specification

Product Description	Mouse monoclonal antibody raised against recombinant human CAMK2G.
Immunogen	Recombinant protein corresponding to amino acid 322-481 of human CAMK2G from <i>E. coli</i> .
Host	Mouse
Theoretical MW (kDa)	62.6
Reactivity	Human
Form	Liquid
Isotype	IgG1

Recommend Usage	ELISA (1:10000) Western Blot (1:500-1:2000) The optimal working dilution should be determined by the end user.
Storage Buffer	In PBS (0.05% sodium azide).
Storage Instruction	Store at 4°C. For long term storage store at -20°C. Aliquot to avoid repeated freezing and thawing.
Note	This product contains sodium azide: a POISONOUS AND HAZARDOUS SUBSTANCE which should be handled by trained staff only.

Applications

- Western Blot (Transfected lysate)

Western blot analysis of Lane 1: HEK293 cell; Lane 2: CAMK2G-hlgGfc transfected HEK293 cell with CAMK2G monoclonal antibody.

- Enzyme-linked Immunoabsorbent Assay

ELISA analysis of CAMK2G monoclonal antibody, clone 6A4A10.

Gene Info — CAMK2G

Entrez GeneID	818
Gene Name	CAMK2G
Gene Alias	CAMK, CAMK-II, CAMKG, FLJ16043, MGC26678
Gene Description	calcium/calmodulin-dependent protein kinase II gamma
Omim ID	602123
Gene Ontology	Hyperlink
Gene Summary	The product of this gene belongs to the Serine/Threonine protein kinase family, and to the Ca(2+)/calmodulin-dependent protein kinase subfamily. Calcium signaling is crucial for several aspects of plasticity at glutamatergic synapses. In mammalian cells the enzyme is composed of four different chains: alpha, beta, gamma, and delta. The product of this gene is a gamma chain. Six alternatively spliced variants that encode six different isoforms have been characterized to date. Additional alternative splice variants that encode different isoforms have been described, but their full-length nature has not been determined. [provided by RefSeq]

Other Designations

CaM kinase II|OTTHUMP00000019843|OTTHUMP00000019844|calcium/calmodulin-dependent protein kinase (CaM kinase) II gamma

Pathway

- [Calcium signaling pathway](#)
- [ErbB signaling pathway](#)
- [Glioma](#)
- [GnRH signaling pathway](#)
- [Long-term potentiation](#)
- [Melanogenesis](#)
- [Neurotrophin signaling pathway](#)
- [Olfactory transduction](#)
- [Wnt signaling pathway](#)

Disease

- [Alzheimer disease](#)
- [Cardiovascular Diseases](#)
- [Cerebral Amyloid Angiopathy](#)
- [Diabetes Mellitus](#)
- [Edema](#)
- [Genetic Predisposition to Disease](#)
- [Neuroblastoma](#)