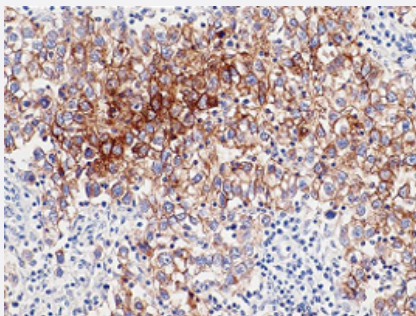


# ALPP monoclonal antibody, clone P16-D

Catalog # MAB1653      Size 100 uL

## Applications



### Immunohistochemistry (Formalin/PFA-fixed paraffin-embedded sections)

Formalin-fixed and paraffin-embedded human seminoma (4 um) stained with ALPP monoclonal antibody, clone P16-D (Cat # MAB1653) shows strong positive membrane immunostaining of tumor cells. Kindly performed and provided by Katarina Poliakova, MD and Lubomir Straka, MD, Ph. D., from Clinical Pathology Presov, Ltd., Presov, Slovakia.

## Specification

<b>Product Description</b>	Rabbit monoclonal antibody raised against synthetic peptide of ALPP.
<b>Immunogen</b>	A synthetic peptide corresponding to internal region of human ALPP.
<b>Host</b>	Rabbit
<b>Reactivity</b>	Human
<b>Form</b>	Liquid
<b>Isotype</b>	IgG
<b>Quality Control Testing</b>	Antibody Reactive Against Synthetic Peptide.
<b>Recommend Usage</b>	Immunohistochemistry (Formalin/PFA-fixed paraffin-embedded sections) (1:100) The optimal working dilution should be determined by the end user.
<b>Storage Buffer</b>	In 20 mM Tris-HCl, pH 8.0 (20 mg/mL BSA, 0.05% sodium azide)
<b>Storage Instruction</b>	Store at 4°C.
<b>Note</b>	This product contains sodium azide: a POISONOUS AND HAZARDOUS SUBSTANCE which should be handled by trained staff only.

## Applications

- Immunohistochemistry (Formalin/PFA-fixed paraffin-embedded sections)

Formalin-fixed and paraffin-embedded human seminoma (4 um) stained with ALPP monoclonal antibody, clone P16-D (Cat # MAB1653) shows strong positive membrane immunostaining of tumor cells. Kindly performed and provided by Katarina Poliakova, MD and Lubomir Straka, MD, Ph. D., from Clinical Pathology Presov, Ltd., Presov, Slovakia.

## Gene Info — ALPP

Entrez GeneID	<a href="#">250</a>
Gene Name	ALPP
Gene Alias	ALP, FLJ61142, PALP, PLAP
Gene Description	alkaline phosphatase, placental (Regan isozyme)
Omim ID	<a href="#">171800</a>
Gene Ontology	<a href="#">Hyperlink</a>
Gene Summary	There are at least four distinct but related alkaline phosphatases: intestinal, placental, placental-like, and liver/bone/kidney (tissue non-specific). The first three are located together on chromosome 2 while the tissue non-specific form is located on chromosome 1. The product of this gene is a membrane bound glycosylated enzyme, also referred to as the heat stable form, that is expressed primarily in the placenta although it is closely related to the intestinal form of the enzyme as well as to the placental-like form. The coding sequence for this form of alkaline phosphatase is unique in that the 3' untranslated region contains multiple copies of an Alu family repeat. In addition, this gene is polymorphic and three common alleles (type 1, type 2 and type 3) for this form of alkaline phosphatase have been well characterized. [provided by RefSeq]
Other Designations	alkaline phosphomonoesterase glycerophosphatase placental alkaline phosphatase

## Pathway

- [Folate biosynthesis](#)
- [gamma-Hexachlorocyclohexane degradation](#)
- [Metabolic pathways](#)

## Disease

- [Birth Weight](#)
- [Fetal Death](#)