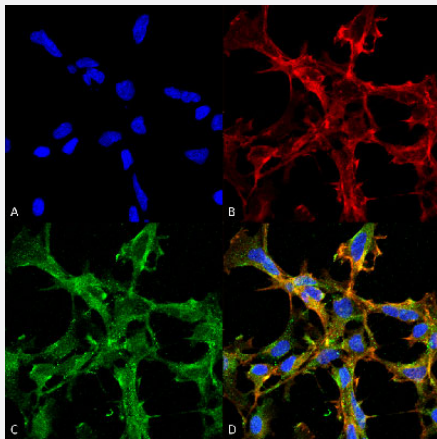


Citrulline monoclonal antibody, clone 2D3.1 (Biotin)

Catalog # MAB16473 Size 100 ug

Applications



Immunocytochemistry

Immunocytochemical staining of HEK293 with Citrulline monoclonal antibody, clone 2D3.1 (Biotin) (Cat # MAB16473). (A) DAPI (blue) nuclear stain, (B) Phalloidin Alex Fluor 633 F-Actin stain, (C) Citrulline Antibody and (D) Composite.

Specification

Product Description	Mouse monoclonal antibody raised against synthetic peptide of Citrulline.
Immunogen	Synthetic L-Citrulline conjugated to Keyhole Limpet Hemocyanin (KLH).
Host	Mouse
Reactivity	Human
Form	Liquid
Conjugation	Biotin
Purification	Protein G purification
Isotype	IgG1

Recommend Usage	ELISA (1:1000) Immunocytochemistry (1:50) Immunofluorescence (1:50) Western Blot (1:1000) The optimal working dilution should be determined by the end user.
Storage Buffer	In PBS, pH 7.4 (50% glycerol, 0.09% sodium azide).
Storage Instruction	Store at -20°C.
Note	This product contains sodium azide: a POISONOUS AND HAZARDOUS SUBSTANCE which should be handled by trained staff only.

Applications

- Western Blot
- Immunocytochemistry
Immunocytochemical staining of HEK293 with Citrulline monoclonal antibody, clone 2D3.1 (Biotin) (Cat # MAB16473). (A) DAPI (blue) nuclear stain, (B) Phalloidin Alex Fluor 633 F-Actin stain, (C) Citrulline Antibody and (D) Composite.
- Immunofluorescence
- Enzyme-linked Immunoabsorbent Assay