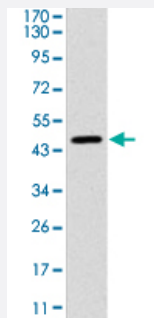


YAP1 monoclonal antibody, clone 1A12

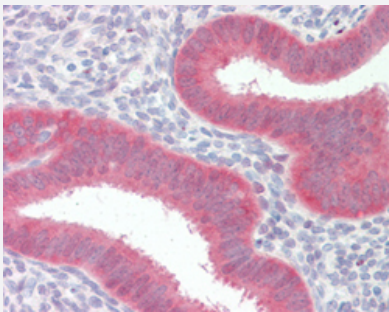
Catalog # MAB16334 Size 50 ug

Applications



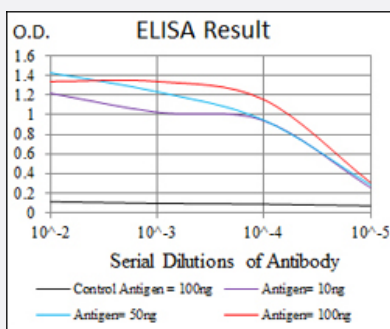
Western Blot (Recombinant protein)

Western Blot analysis of human YAP1 recombinant protein with YAP1 monoclonal antibody, clone 1A12 (Cat # MAB16334).



Immunohistochemistry (Formalin/PFA-fixed paraffin-embedded sections)

Immunohistochemical staining (Formalin-fixed paraffin-embedded sections) of human uterus with YAP1 monoclonal antibody, clone 1A12 (Cat # MAB16334).



Enzyme-linked Immunoabsorbent Assay

ELISA analysis with YAP1 monoclonal antibody, clone 1A12 (Cat # MAB16334).

Specification

Product Description

Mouse monoclonal antibody raised against recombinant human YAP1.

Immunogen

Recombinant protein corresponding to human YAP1 from *E. coli*.

Host	Mouse
Reactivity	Human
Form	Liquid
Purification	Purified
Isotype	IgG1
Recommend Usage	ELISA (1:10000) Flow Cytometry (1:200-1:400) Immunohistochemistry (Formalin/PFA-fixed paraffin-embedded sections) (1:200) Western Blot (1:500-1:2000) The optimal working dilution should be determined by the end user.
Storage Buffer	In PBS (0.05% protein stabilizer, 0.05% sodium azide).
Storage Instruction	Store at 4°C. For long term storage store at -20°C. Aliquot to avoid repeated freezing and thawing.
Note	This product contains sodium azide: a POISONOUS AND HAZARDOUS SUBSTANCE which should be handled by trained staff only.

Applications

- Western Blot (Recombinant protein)

Western Blot analysis of human YAP1 recombinant protein with YAP1 monoclonal antibody, clone 1A12 (Cat # MAB16334).

- Immunohistochemistry (Formalin/PFA-fixed paraffin-embedded sections)

Immunohistochemical staining (Formalin-fixed paraffin-embedded sections) of human uterus with YAP1 monoclonal antibody, clone 1A12 (Cat # MAB16334).

- Enzyme-linked Immunoabsorbent Assay

ELISA analysis with YAP1 monoclonal antibody, clone 1A12 (Cat # MAB16334).

- Flow Cytometry

Gene Info — YAP1

Entrez GeneID [10413](#)

Protein Accession# [P46937](#)

Gene Name	YAP1
Gene Alias	YAP , YAP2, YAP65, YKI
Gene Description	Yes-associated protein 1, 65kDa
Omim ID	606608
Gene Ontology	Hyperlink
Gene Summary	This gene encodes the human ortholog of chicken YAP protein which binds to the SH3 domain of the Yes proto-oncogene product. This protein contains a WW domain that is found in various structural, regulatory and signaling molecules in yeast, nematode, and mammals, and may be involved in protein-protein interaction. [provided by RefSeq]
Other Designations	yes-associated protein 2

Disease

- [Tobacco Use Disorder](#)