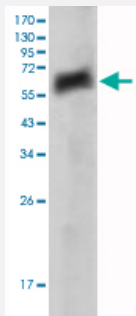


# AXL monoclonal antibody, clone 7E10

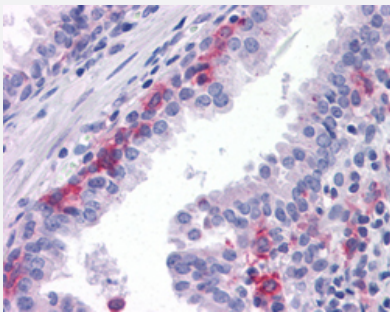
Catalog # MAB16174      Size 50 uL

## Applications



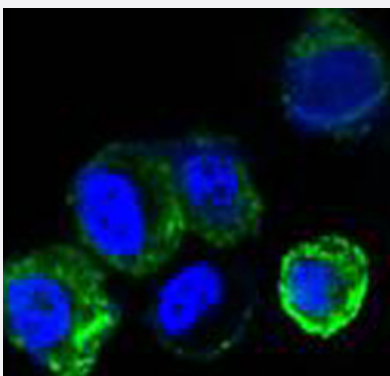
### Western Blot (Recombinant protein)

Western Blot analysis of AXL recombinant protein with AXL monoclonal antibody, clone 7E10 (Cat # MAB16174).



### Immunohistochemistry (Formalin/PFA-fixed paraffin-embedded sections)

Immunohistochemical staining (Formalin-fixed paraffin-embedded sections) of human prostate with AXL monoclonal antibody, clone 7E10 (Cat # MAB16174).



### Immunofluorescence

Immunofluorescent staining of HEK293 cells with AXL monoclonal antibody, clone 7E10 (Cat # MAB16174) (Green) shows membrane localization.

## Specification

### Product Description

Mouse monoclonal antibody raised against recombinant human AXL.

<b>Immunogen</b>	Purified recombinant hlgGFc tag fusion fragment corresponding to extracellular domain of human AXL from HEK293 cell line.
<b>Host</b>	Mouse
<b>Reactivity</b>	Human
<b>Form</b>	Liquid
<b>Isotype</b>	IgG1
<b>Recommend Usage</b>	ELISA (1:10000) Immunofluorescence (1:200-1:1000) Immunohistochemistry (Formalin/PFA-fixed paraffin-embedded sections) (1:200) Western Blot (1:500-1:2000) The optimal working dilution should be determined by the end user.
<b>Storage Buffer</b>	In ascites (0.03% sodium azide).
<b>Storage Instruction</b>	Store at 4°C. For long term storage store at -20°C. Aliquot to avoid repeated freezing and thawing.
<b>Note</b>	This product contains sodium azide: a POISONOUS AND HAZARDOUS SUBSTANCE which should be handled by trained staff only.

## Applications

- Western Blot (Recombinant protein)

Western Blot analysis of AXL recombinant protein with AXL monoclonal antibody, clone 7E10 (Cat # MAB16174).

- Immunohistochemistry (Formalin/PFA-fixed paraffin-embedded sections)

Immunohistochemical staining (Formalin-fixed paraffin-embedded sections) of human prostate with AXL monoclonal antibody, clone 7E10 (Cat # MAB16174).

- Immunofluorescence

Immunofluorescent staining of HEK293 cells with AXL monoclonal antibody, clone 7E10 (Cat # MAB16174) (Green) shows membrane localization.

- Enzyme-linked Immunoabsorbent Assay

## Gene Info — AXL

Entrez GeneID

[558](#)

Protein Accession#	<a href="#">P30530</a>
Gene Name	AXL
Gene Alias	JTK11, UFO
Gene Description	AXL receptor tyrosine kinase
Omim ID	<a href="#">109135</a>
Gene Ontology	<a href="#">Hyperlink</a>
Gene Summary	<p>The protein encoded by this gene is a member of the receptor tyrosine kinase subfamily. Although it is similar to other receptor tyrosine kinases, this protein represents a unique structure of the extracellular region that juxtaposes IgL and FNIII repeats. It transduces signals from the extracellular matrix into the cytoplasm by binding growth factors like vitamin K-dependent protein growth-arrest-specific gene 6. It is involved in the stimulation of cell proliferation and can also mediate cell aggregation by homophilic binding. Alternatively spliced transcript variants encoding different isoforms have been identified. [provided by RefSeq]</p>
Other Designations	AXL transforming sequence/gene oncogene AXL

## Disease

- [Cardiovascular Diseases](#)
- [Carotid Artery Diseases](#)
- [Diabetes Mellitus](#)
- [Edema](#)
- [Genetic Predisposition to Disease](#)
- [Stroke](#)