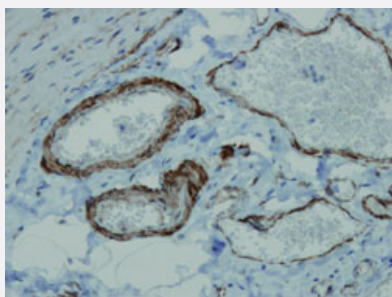


ACTA2 monoclonal antibody, clone M16-L

Catalog # MAB15974 Size 100 uL

Applications



Immunohistochemistry (Formalin/PFA-fixed paraffin-embedded sections)

Immunohistochemical staining (Formalin-fixed paraffin-embedded sections) of human small intestine with ACTA2 monoclonal antibody, clone M16-L (Cat # MAB15974).

Specification

Product Description	Rabbit monoclonal antibody raised against synthetic peptide of human ACTA2.
Immunogen	A synthetic peptide corresponding to N-terminus of human ACTA2.
Host	Rabbit
Reactivity	Human
Form	Liquid
Purification	EVAC purification
Recommend Usage	Immunohistochemistry (Formalin/PFA-fixed paraffin-embedded sections) (1:100-1:200) The optimal working dilution should be determined by the end user.
Storage Buffer	In 20 mM Tris-HCl buffer, pH 8.0 (20 mg/mL BSA, 0.05% Sodium Azide).
Storage Instruction	Store at 4°C. Do not freeze.
Note	This product contains sodium azide: a POISONOUS AND HAZARDOUS SUBSTANCE which should be handled by trained staff only.

Applications

- Immunohistochemistry (Formalin/PFA-fixed paraffin-embedded sections)

Immunohistochemical staining (Formalin-fixed paraffin-embedded sections) of human small intestine with ACTA2 monoclonal antibody, clone M16-L (Cat # MAB15974).

Gene Info — ACTA2

Entrez GeneID [59](#)

Protein Accession# [P62736](#)

Gene Name ACTA2

Gene Alias AAT6, ACTSA

Gene Description actin, alpha 2, smooth muscle, aorta

Omim ID [102620](#)

Gene Ontology [Hyperlink](#)

Gene Summary The protein encoded by this gene belongs to the actin family of proteins, which are highly conserved proteins that play a role in cell motility, structure and integrity. Alpha, beta and gamma actin isoforms have been identified, with alpha actins being a major constituent of the contractile apparatus, while beta and gamma actins are involved in the regulation of cell motility. This actin is an alpha actin that is found in skeletal muscle. Defects in this gene cause aortic aneurysm familial thoracic type 6. Multiple alternatively spliced variants, encoding the same protein, have been identified. [provided by RefSeq]

Other Designations OTTHUMP00000020042|alpha 2 actin|alpha-cardiac actin|growth-inhibiting gene 46

Pathway

- [Vascular smooth muscle contraction](#)

Disease

- [Alzheimer Disease](#)
- [Cardiovascular Diseases](#)
- [Diabetes Mellitus](#)

- [Edema](#)
- [Genetic Predisposition to Disease](#)