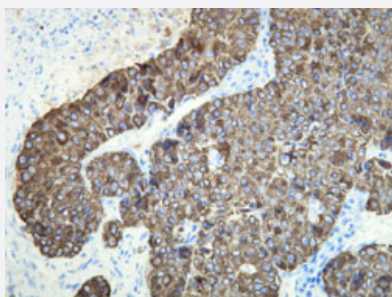


KRT18 monoclonal antibody, clone R20-H

Catalog # MAB15961 Size 200 uL

Applications



Immunohistochemistry (Formalin/PFA-fixed paraffin-embedded sections)

Immunohistochemical staining (Formalin-fixed paraffin-embedded sections) of human pancreatic cancer with KRT18 monoclonal antibody, clone R20-H (Cat # MAB15961).

Specification

Product Description	Rabbit monoclonal antibody raised against synthetic peptide of human KRT18.
Immunogen	A synthetic peptide corresponding to C-terminus of human KRT18.
Host	Rabbit
Reactivity	Human
Form	Liquid
Purification	EVAC purification
Recommend Usage	Immunohistochemistry (Formalin/PFA-fixed paraffin-embedded sections) (1:100-1:300) The optimal working dilution should be determined by the end user.
Storage Buffer	In 20 mM Tris-HCl buffer, pH 8.0 (20 mg/mL BSA, 0.05% Sodium Azide).
Storage Instruction	Store at 4°C. Do not freeze.
Note	This product contains sodium azide: a POISONOUS AND HAZARDOUS SUBSTANCE which should be handled by trained staff only.

Applications

- Immunohistochemistry (Formalin/PFA-fixed paraffin-embedded sections)

Immunohistochemical staining (Formalin-fixed paraffin-embedded sections) of human pancreatic cancer with KRT18 monoclonal antibody, clone R20-H (Cat # MAB15961).

Gene Info — KRT18

Entrez GeneID [3875](#)

Protein Accession# [P05783](#)

Gene Name KRT18

Gene Alias CYK18, K18

Gene Description keratin 18

Omim ID [148070 215600](#)

Gene Ontology [Hyperlink](#)

Gene Summary KRT18 encodes the type I intermediate filament chain keratin 18. Keratin 18, together with its filament partner keratin 8, are perhaps the most commonly found members of the intermediate filament gene family. They are expressed in single layer epithelial tissues of the body. Mutations in this gene have been linked to cryptogenic cirrhosis. Two transcript variants encoding the same protein have been found for this gene. [provided by RefSeq]

Other Designations cell proliferation-inducing protein 46|cytokeratin 18

Pathway

- [Pathogenic Escherichia coli infection - EHEC](#)

Disease

- [Cleft Lip](#)
- [Cleft Palate](#)
- [Drug-Induced Liver Injury](#)
- [Genetic Predisposition to Disease](#)

- [Liver Cirrhosis](#)
- [Liver Failure](#)