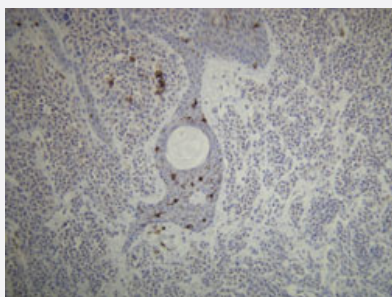


# CD1A monoclonal antibody, clone L21-A

Catalog # MAB15951      Size 200 uL

## Applications



### Immunohistochemistry (Formalin/PFA-fixed paraffin-embedded sections)

Immunohistochemical staining (Formalin-fixed paraffin-embedded sections) of human epidermis with CD1A monoclonal antibody, clone L21-A (Cat # MAB15951).

## Specification

<b>Product Description</b>	Rabbit monoclonal antibody raised against synthetic peptide of human CD1A.
<b>Immunogen</b>	A synthetic peptide corresponding to transmembrane domain at C-terminus of human CD1A.
<b>Host</b>	Rabbit
<b>Reactivity</b>	Human
<b>Form</b>	Liquid
<b>Purification</b>	EVAC purification
<b>Recommend Usage</b>	Immunohistochemistry (Formalin/PFA-fixed paraffin-embedded sections) (1:100-1:200) The optimal working dilution should be determined by the end user.
<b>Storage Buffer</b>	In 20 mM Tris-HCl buffer, pH 8.0 (20 mg/mL BSA, 0.05% Sodium Azide).
<b>Storage Instruction</b>	Store at 4°C. Do not freeze.
<b>Note</b>	This product contains sodium azide: a POISONOUS AND HAZARDOUS SUBSTANCE which should be handled by trained staff only.

## Applications

- Immunohistochemistry (Formalin/PFA-fixed paraffin-embedded sections)

Immunohistochemical staining (Formalin-fixed paraffin-embedded sections) of human epidermis with CD1A monoclonal antibody, clone L21-A (Cat # MAB15951).

## Gene Info — CD1A

Entrez GeneID	<a href="#">909</a>
Protein Accession#	<a href="#">P06126</a>
Gene Name	CD1A
Gene Alias	CD1, FCB6, HTA1, R4, T6
Gene Description	CD1a molecule
Omim ID	<a href="#">188370</a>
Gene Ontology	<a href="#">Hyperlink</a>
Gene Summary	This gene encodes a member of the CD1 family of transmembrane glycoproteins, which are structurally related to the major histocompatibility complex (MHC) proteins and form heterodimers with beta-2-microglobulin. The CD1 proteins mediate the presentation of primarily lipid and glycolipid antigens of self or microbial origin to T cells. The human genome contains five CD1 family genes organized in a cluster on chromosome 1. The CD1 family members are thought to differ in their cellular localization and specificity for particular lipid ligands. The protein encoded by this gene localizes to the plasma membrane and to recycling vesicles of the early endocytic system. Alternatively spliced transcript variants have been observed, but their biological validity has not been determined. [provided by RefSeq]
Other Designations	CD1A antigen CD1A antigen, a polypeptide OTTHUMP00000018907 T-cell surface antigen T6/L eu-6 T-cell surface glycoprotein CD1a cluster of differentiation 1 A cortical thymocyte antigen CD1 A differentiation antigen CD1-alpha-3 epidermal dendritic cell marker

## Pathway

- [Hematopoietic cell lineage](#)

## Disease

- [Campylobacter Infections](#)

- [Genetic Predisposition to Disease](#)
- [Guillain-Barre Syndrome](#)
- [Lung Diseases](#)
- [Mycobacterium Infections](#)
- [Polyradiculoneuropathy](#)