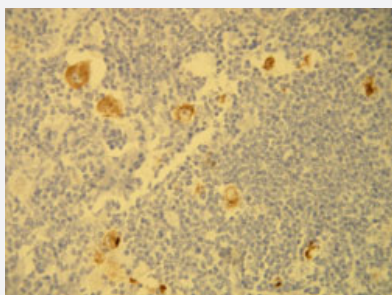


LMP1 monoclonal antibody, clone S20-D

Catalog # MAB15947 Size 200 uL

Applications



Immunohistochemistry (Formalin/PFA-fixed paraffin-embedded sections)

Immunohistochemical staining (Formalin-fixed paraffin-embedded sections) of Hodgkin's lymphoma with LMP1 monoclonal antibody, clone S20-D (Cat # MAB15947).

Specification

| | |
|----------------------------|--|
| Product Description | Rabbit monoclonal antibody raised against synthetic peptide of human LMP1. |
| Immunogen | A synthetic peptide corresponding to C-terminus of Epstein-Barr virus, Latent Membrane Protein-1 |
| Host | Rabbit |
| Reactivity | Human |
| Form | Liquid |
| Purification | EVAC purification |
| Recommend Usage | Immunohistochemistry (Formalin/PFA-fixed paraffin-embedded sections) (1:100-1:200) The optimal working dilution should be determined by the end user. |
| Storage Buffer | In 20 mM Tris-HCl buffer, pH 8.0 (20 mg/mL BSA, 0.05% Sodium Azide). |
| Storage Instruction | Store at 4°C. Do not freeze. |
| Note | This product contains sodium azide: a POISONOUS AND HAZARDOUS SUBSTANCE which should be handled by trained staff only. |

Applications

- Immunohistochemistry (Formalin/PFA-fixed paraffin-embedded sections)

Immunohistochemical staining (Formalin-fixed paraffin-embedded sections) of Hodgkin's lymphoma with LMP1 monoclonal antibody, clone S20-D (Cat # MAB15947).

Gene Info — LMP-1

| | |
|---------------|-------------------------|
| Entrez GeneID | 3783750 |
|---------------|-------------------------|

| | |
|--------------------|------------------------|
| Protein Accession# | P03230 |
|--------------------|------------------------|

| | |
|-----------|-------|
| Gene Name | LMP-1 |
|-----------|-------|

| | |
|------------|---|
| Gene Alias | - |
|------------|---|

| | |
|------------------|-------|
| Gene Description | LMP-1 |
|------------------|-------|

| | |
|---------------|---------------------------|
| Gene Ontology | Hyperlink |
|---------------|---------------------------|

| | |
|--------------------|---|
| Other Designations | - |
|--------------------|---|